

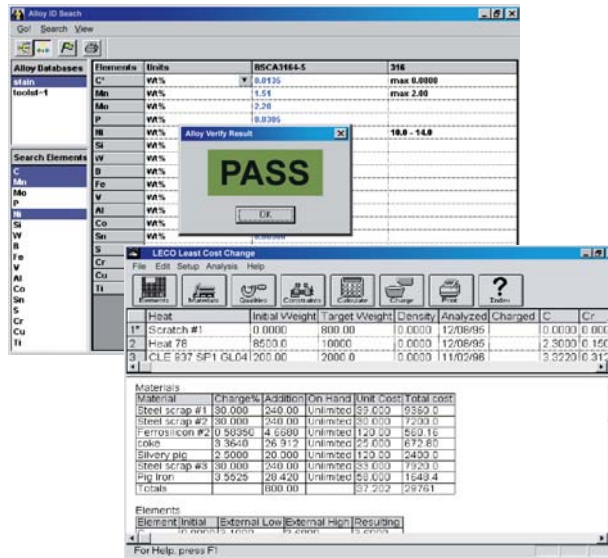
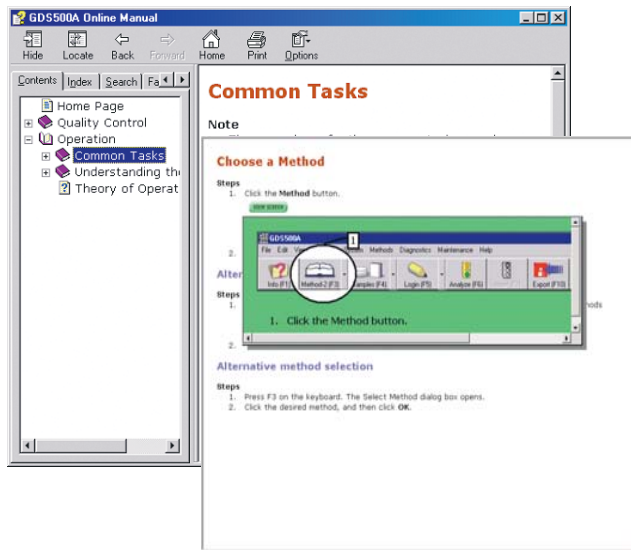
Easy-To-Use Windows®-Based Operating Software

| Element | Value | Control | Range |
|---------|--------|---------|--------|
| C | 3.04 | 0.0141 | 3.05 |
| Si | 1.41 | 0.0060 | 1.42 |
| Mn | 1.27 | 0.0237 | 1.25 |
| P | 0.420 | 0.0054 | 0.426 |
| S | 0.0366 | 0.0006 | 0.0364 |
| Cr | 0.183 | 0.0027 | 0.180 |
| Ni | 0.160 | 0.0013 | 0.159 |
| Mo | 0.0948 | 0.0017 | 0.0975 |
| V | 0.0614 | 0.0010 | 0.0614 |
| Cu | 0.0772 | 0.0010 | 0.0758 |
| Al | 0.0197 | 0.0002 | 0.0195 |
| Hb | 0.0099 | 0.0004 | 0.0093 |
| Ti | 0.0763 | 0.0008 | 0.0773 |
| Pb | 0.0131 | 0.0008 | 0.0125 |
| S | 0.0088 | 0.0003 | 0.0088 |
| Sb | 0.0086 | 0.0006 | 0.0079 |
| Fe | 14.31 | 0.08974 | 14.19 |
| Ce | 0.0077 | 0.0028 | 0.0042 |

| Element | Value | Control | Range |
|---------|--------|---------|--------|
| C | 3.06 | 3.01 | 3.04 |
| Si | 1.42 | 1.40 | 1.41 |
| Mn | 1.32 | 1.23 | 1.29 |
| P | 0.430 | 0.409 | 0.421 |
| S | 0.0378 | 0.0355 | 0.0374 |
| Cr | 0.189 | 0.178 | 0.186 |
| Ni | 0.163 | 0.158 | 0.162 |

User-Defined Quality Control and Flexible Interface

★ = Passes acceptance criteria ▼ = failed acceptance criteria • Review analyses and statistics in a table or graphical format • User options easily customized to print, transmit, and store results.



On-Board Help Manual for Quick Reference

Side-by-Side View of Alloy ID and Least Cost Charge



Options

- Alloy ID software
- Least cost charge software
- NWA quality analyst software
- Touchscreen color monitor
- Deskjet/dot matrix printer kits
- SmartLine® Remote Diagnostics
- Sample holders
- Sample preparation equipment



Sample Holders
A variety of sample holders are available to meet your needs.

3000 Lakeview Avenue • St. Joseph, MI 49085 • Phone: 800-292-6141 • Fax: 269-982-8977
 info@leco.com • www.leco.com • ISO-9001:2000 • No. FM 24045 • LECO is a registered trademark of LECO Corporation.



LECO®
GDS500A Glow Discharge Spectrometer

LECO GDS500A

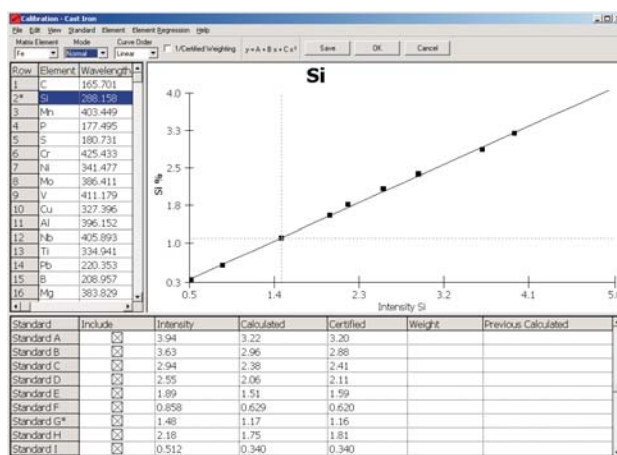
Technology designed for routine production, process, and quality control

LECO's CCD-based Glow Discharge Atomic Emission Spectrometer (AES) offers you state-of-the-art technology designed specifically for routine elemental determination in most ferrous and nonferrous materials. The GDS500A features improved performance, stability, accuracy, and precision in steel, iron (including as-cast), aluminum, copper, zinc, nickel, cobalt, tungsten, and titanium. Low melting alloys, resulfurized steel, powder metals, and other difficult materials can be run in a production environment.

Sample types include bulk, sheet, wire, pressed, and mounted samples. Sample holders are available to meet non-standard sample forms.

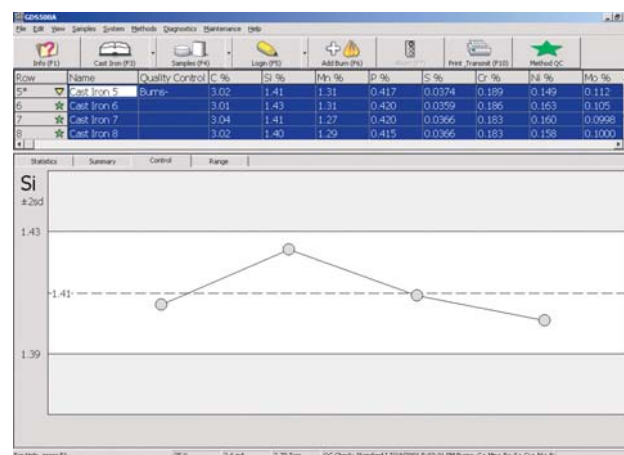
LECO GD-AES Advantage

- Linear calibrations with wide dynamic range
- Uniform sample excitation offers improved precision
- Freedom from metallurgical history
- Low Ar gas consumption reduces cost per test
- Separation of sample sputtering from excitation
- Quick matrix change with minimal memory effects
- Auto cleaning between analyses



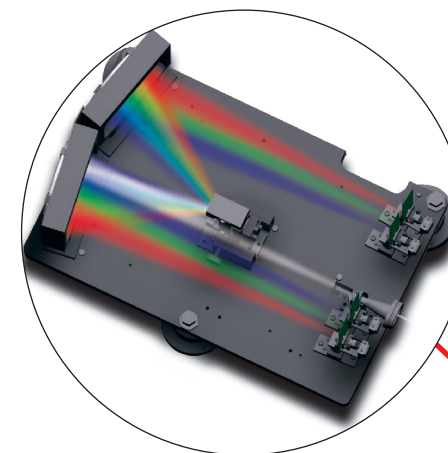
Simple, Linear Calibrations

GD-AES provides narrow emission lines, less interference, and less complex spectra when compared to other sources.



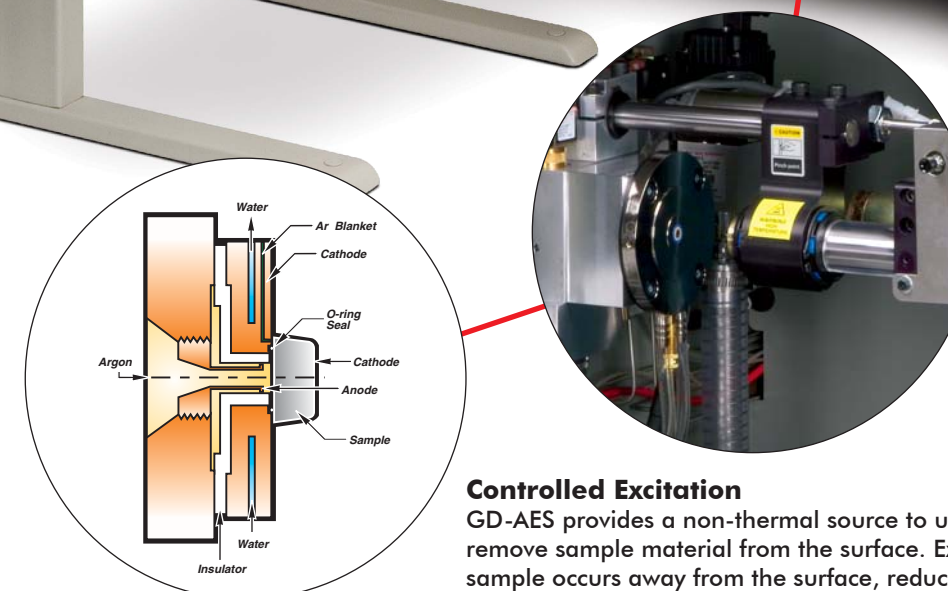
Windows®-Based, Quality Control Oriented Software

Offers user-defined quality control features for analysis and acceptance to match your requirements. On-board help manual and available **SmartLine**® Remote Diagnostics add convenience and ease-of-use.



Solid-State Technology

LECO's exclusive CCD-based design ensures stability, flexibility, and performance for ferrous and nonferrous applications. Full wavelength coverage from 165 nm to 460 nm.



Controlled Excitation

GD-AES provides a non-thermal source to uniformly remove sample material from the surface. Excitation of the sample occurs away from the surface, reducing chemical and metallurgical effects.