

Accessories and Equipment

A wide variety of metallographic/optical equipment and accessories for every application.



LECO/PAX-it™ PAXcam™
Available resolutions include 2, 2+ (for low light), 3, 5, and ARC (adjustable resolutions).



Inclusion32 Software
Method customizing is available using LECO's Inclusions32 software (IA32 Image Analysis System).



GPX-Series Grinder/Polishers
Variable wheel base and speeds to match your needs.



Traceable Stage Micrometers
Micro for reflected light microscopy; macro for stereo microscopes. Traceable to ISO 17025 through A2LA accreditation.



Hardness Testers
Choose from manual and automatic models for Micro-indentation, Macro-Vickers, or Rockwell-type testing.



Sectioning Machines
Versatile sectioning machines offer both linear and radial feed configurations in efficient benchtop and floor models.

LECO Optical Service: Routine maintenance extends the life of your optical equipment.



Service
Available at our state-of-the-art facility in St. Joseph, Michigan.

Repair
Complete repair and overhaul of your optical equipment by factory trained service specialists.

Calibrations
Calibrations are A2LA accredited in the U.S.A. and Canada (certificate #1845.01; copies available at leco.com or call 269-982-2385).

Technical Support
Call LECO Optical Service if you have any questions or problems (269-982-2385).



LECO carries a complete line of optical products to meet your laboratory production or research needs.



GX51/71 Inverted Metallurgical Microscopes



GX-41 Inverted Metallurgical Microscope



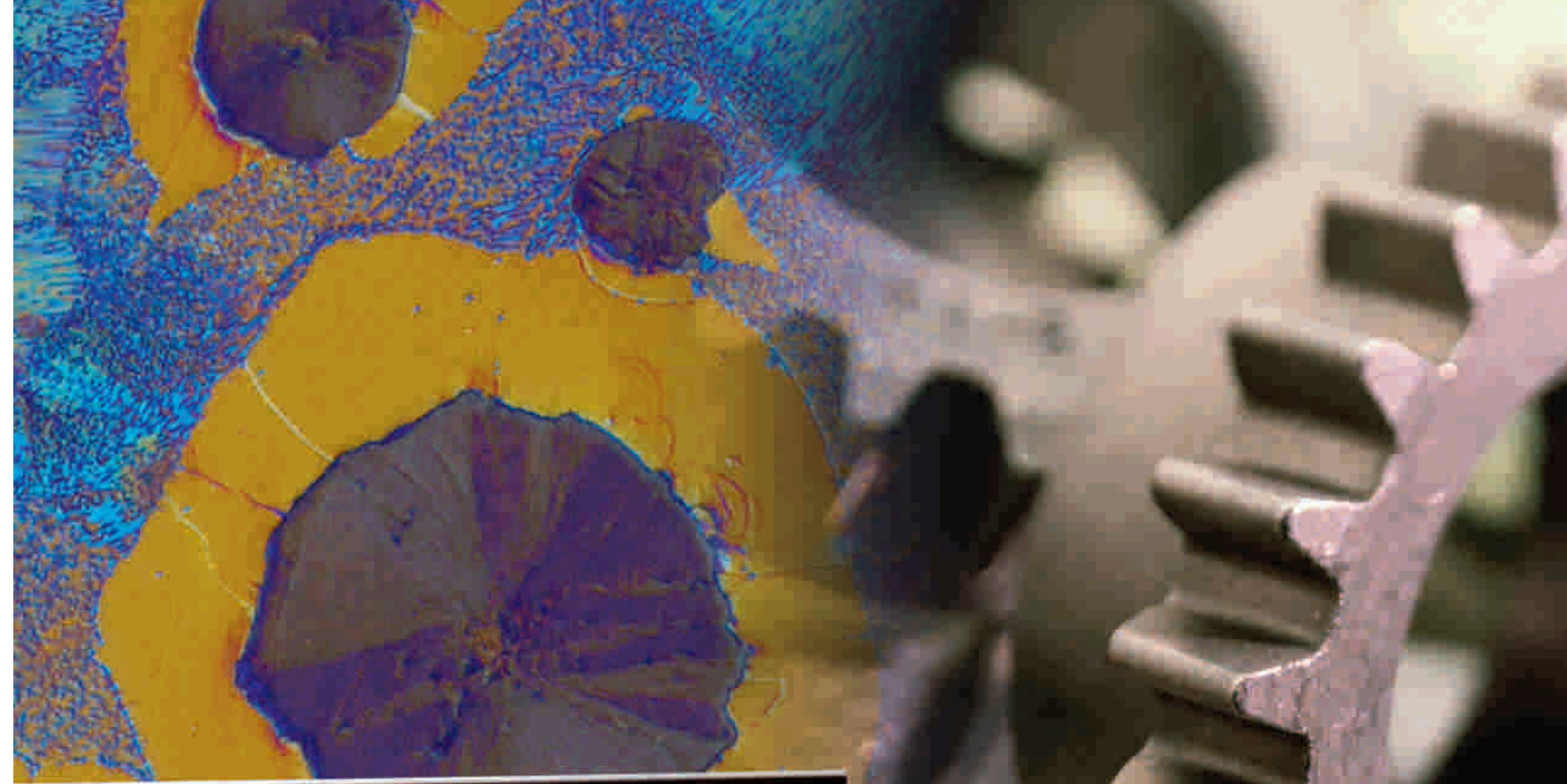
BX-51 Upright Microscope



SZX-16 Zoom Stereo Microscope

3000 Lakeview Avenue • St. Joseph, MI 49085 • Phone: 800-292-6141 • Fax: 269-982-8977
info@leco.com • www.leco.com • ISO-9001:2000 • No. FM 24045 • LECO is a registered trademark of LECO Corporation.

LECO
Delivering the Right Results



LECO
IA44 Image Analysis System

IA44 Image Analysis/Management System

LECO's versatile IA44 Image Analysis/Management System allows you to easily transform raw data into valuable information that can be communicated with professional results. The combination of powerful Image Management capabilities with point-and-click simplicity provides an ideal solution for multiple users with various levels of expertise. An easy-to-use IA44 application wizard allows you to develop advanced applications from scratch or modify pre-existing applications. Save your image data or export to a Microsoft® Excel template for effective, boardroom-ready reports. For added convenience, the IA44's PAX-it™ based software allows for easy image management functionality to save, organize, and easily find all images and related data.

- Simple operation
- A variety of customizable, application-specific toolbar buttons
- Comprehensive professional-grade software tools
- Easy-to-use application wizards



Easy-to-Use File System



Sample data can be saved and organized within the IA44/PAX-it system with a familiar file cabinet layout. An optional CD creator module is available to save images and data outside your hard drive, while still keeping the IA44/PAX-it format for easy image/data retrieval.

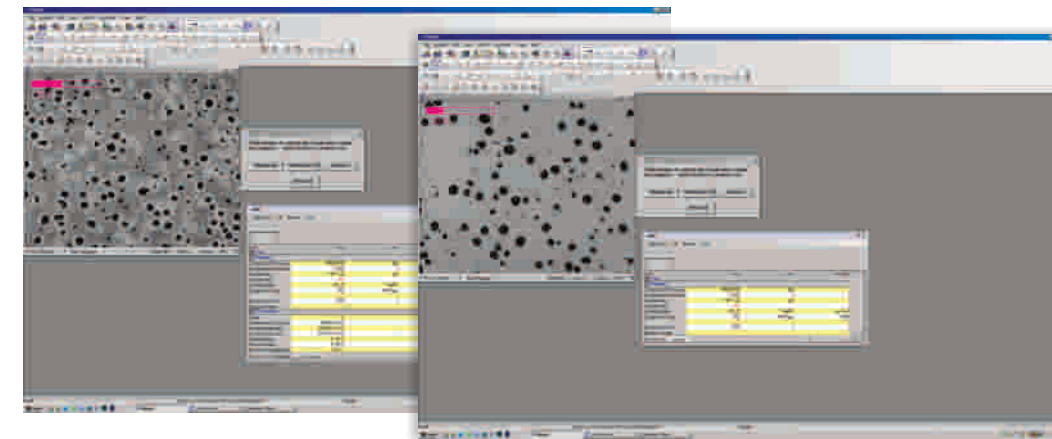
Application Wizard



Users at every skill level can create their own applications using the IA44 application wizard.

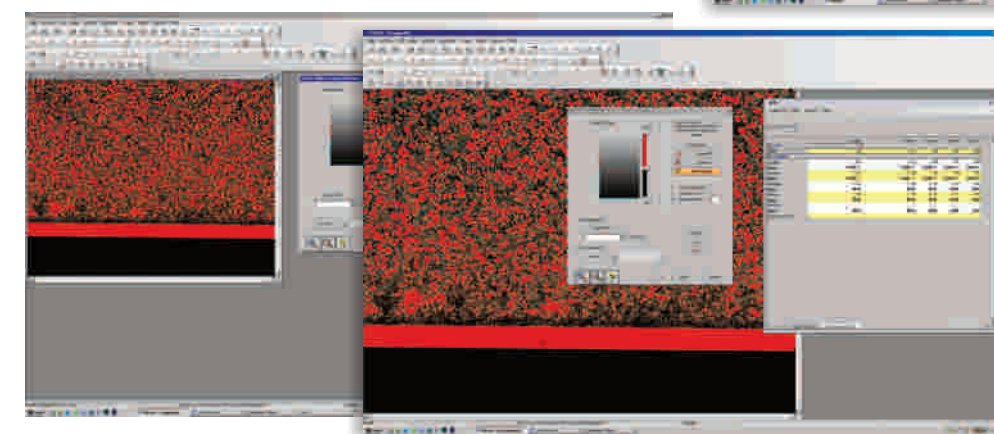
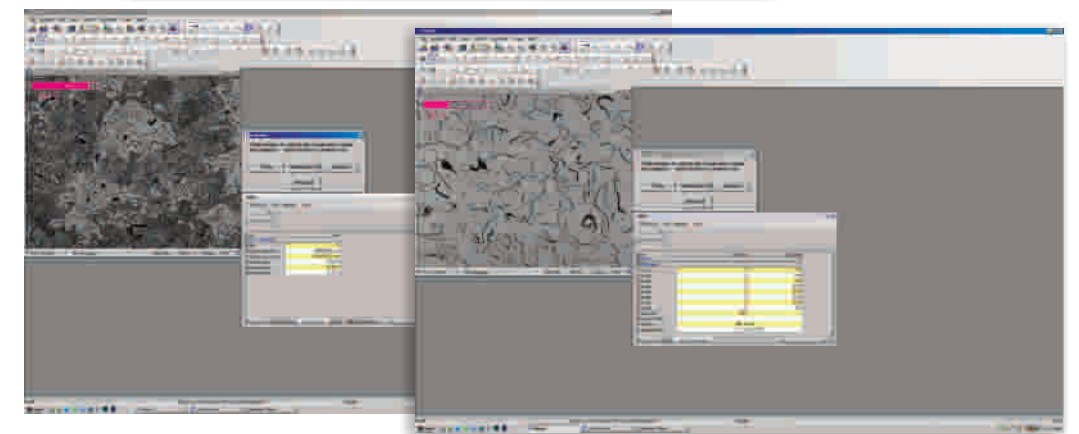
Application Samples

Just a few applications are highlighted below. Other applications include: **Porosity • Area Fractions • Particle Size • Dendrite Arm Spacing (DAS) • Pearlite/Ferrite • Cast Iron**



Ductile Iron—Nodularity is determined quickly and efficiently with a minimal level of effort and user involvement. Pearlite, Ferrite, and Carbides can also be included in one analysis.

Gray Iron—Graphite Flake is determined quickly and efficiently with a minimal level of effort. Pearlite, Ferrite, and Carbides can also be included in one analysis.



Coating Thickness—The screens to the left show how the coating thickness is determined by threshold method. The application will determine straight or curved coatings without manipulation.

Grain Size—Grain size can be determined according to ASTM E-1382. Other grain size methods are also available in the IA44.

