

# AC500

## Calorimeter



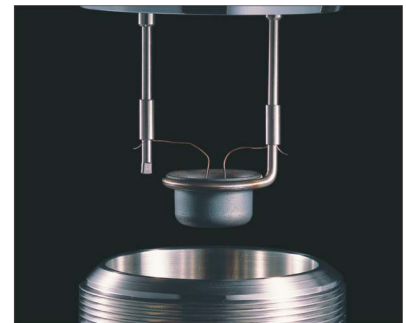
ASTM/DIN-approved, the robust AC500 from LECO quickly determines gross calorific content.

### Unique Design

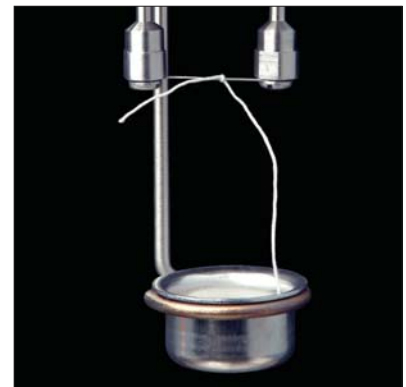
The AC500 Iso-peribol Calorimeter features an integral water-measuring and combustion vessel-filling station simplifying sample preparation. This stand-alone benchtop unit has a fully integrated circulation system, making it compact as well as simple to operate. No additional heaters or coolers are required. A Windows®-based operating system uses an electronic thermometer with an accuracy of 0.0001°C to measure the temperature every six seconds. The AC500 also features the unique ability to constantly monitor temperature in both the outer jacket and the calorimeter proper, making two-channel correction possible.

### A High Level of Performance

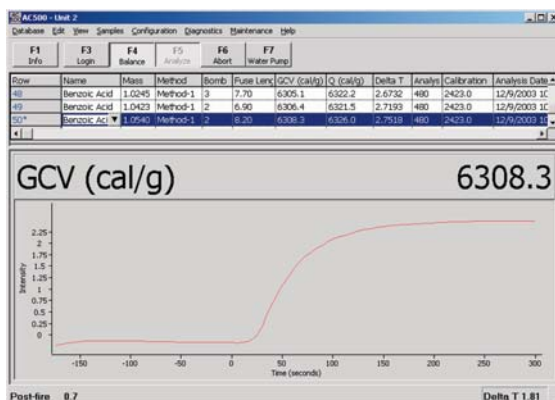
The AC500 achieves high precision across a wide range of sample sizes and ambient conditions. Results may be obtained using a choice of three modes: the traditional Regnault-Pfaundler = 20 minutes, Precision = 8 minutes, or Predictive = 4.5 to 7.5 minutes.



Combustion vessel design makes pre-/post-handling of samples trouble-free.



Optional string-ignition combustion vessel provides a seamless analysis without fuse wire connections.



LECO's AC500 Windows®-based software seamlessly manages data, report generation, LIMS compatibility, and can control up to four separate calorimeters through a single PC.

**LECO**<sup>®</sup>  
Delivering the Right Results