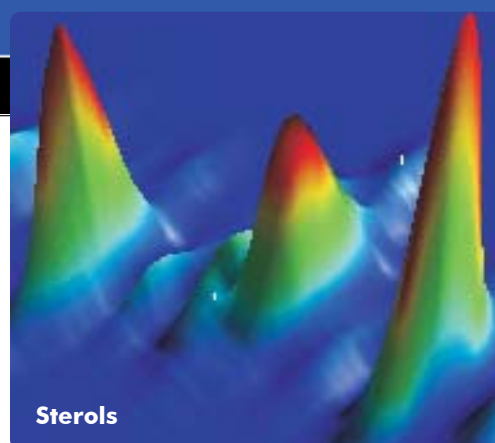
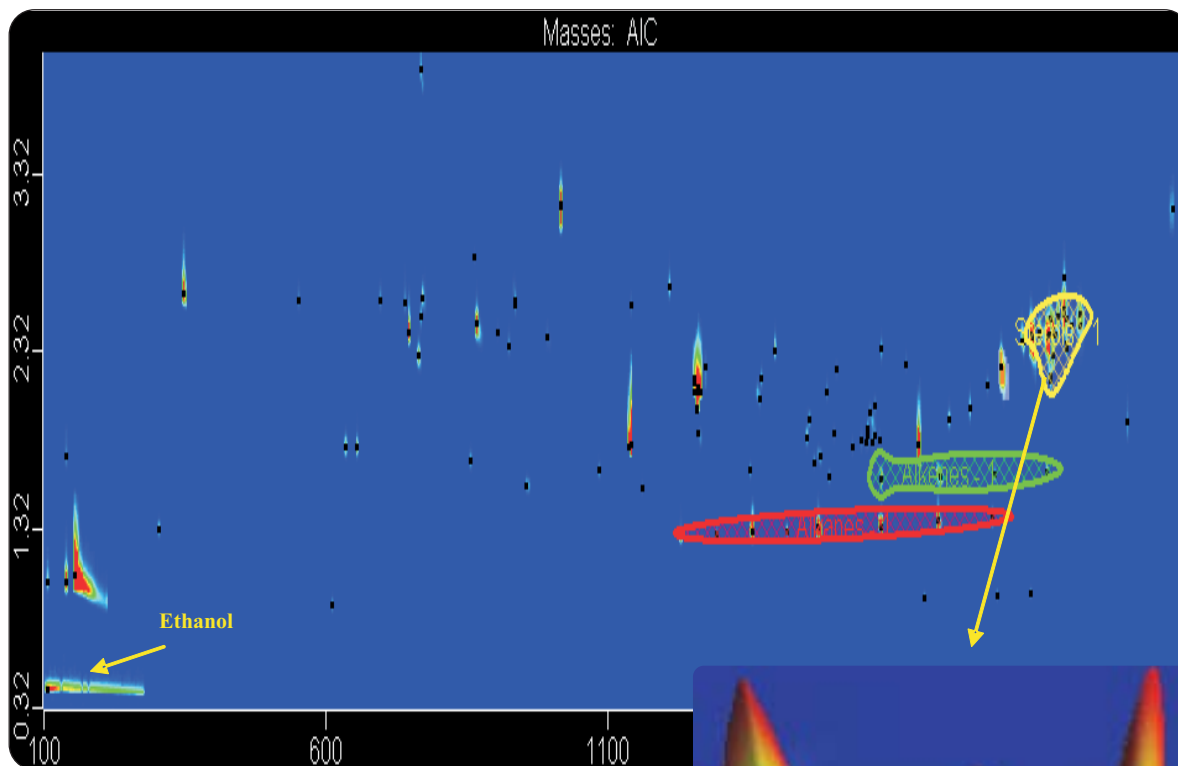


# Analysis of Beer by SPME GCxGC-TOFMS

Life Science and Chemical Analysis Centre  
LECO Corporation, Saint Joseph, Michigan USA



**Columns:**  
30 m x 0.25 mm x 0.25  $\mu$ m Rtx-1  
1.5 m x 0.1 mm x 0.1  $\mu$ m DB-17

**TOFMS:**  
35 to 550 m/z @ 200 spectra/s

For questions on this analysis  
e-mail us at: [life\\_science@leco.com](mailto:life_science@leco.com)

For a complete listing of snapshots  
and application notes visit us on the  
web at [www.leco.com](http://www.leco.com)



Application Snapshot

