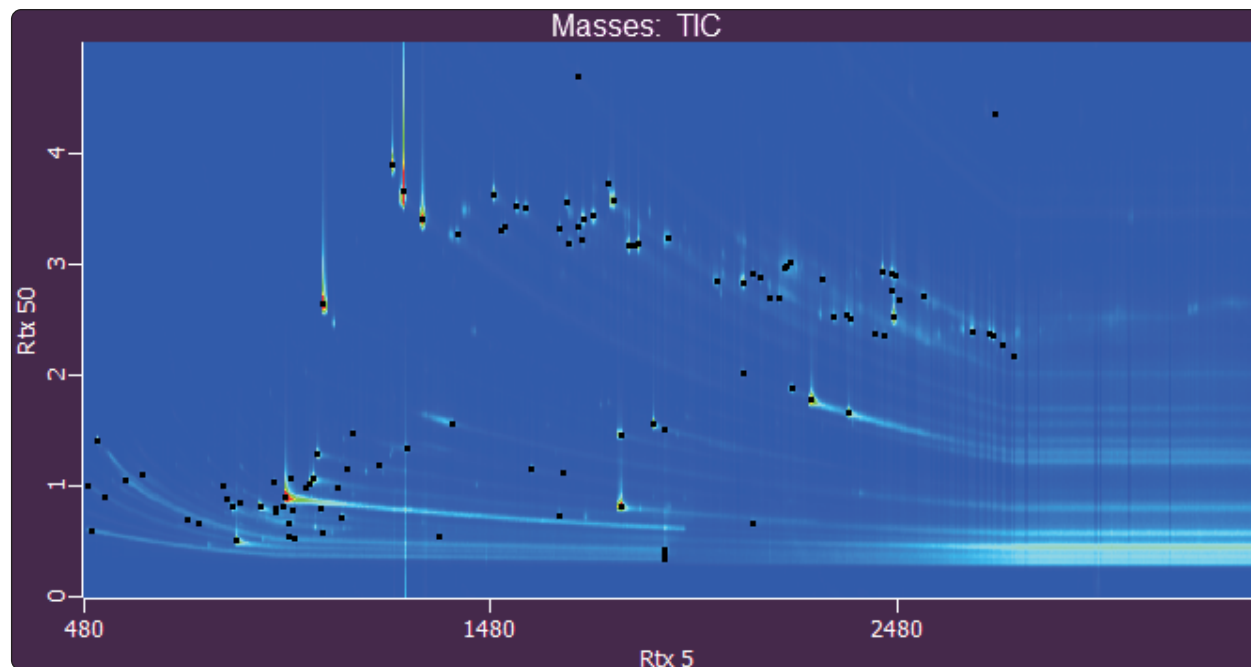


Analysis of Biodiesel Samples Derived from Palm Oil by GCxGC-FID

Life Science and Chemical Analysis Centre
LECO Corporation, Saint Joseph, Michigan USA



A GCxGC-FID contour plot of biodiesel derived from palm oil. Peak markers are shown for peaks with a signal-to-noise ratio of $\geq 30:1$.

Columns:

30 m x 0.25 mm x 0.25 μ m Rtx-5sil MS
2.0 m x 0.18 mm x 0.2 μ m Rtx-50

Detector:

FID at 50 Hz

For questions on this analysis
e-mail us at: life_science@leco.com

For a complete listing of snapshots
and application notes visit us on the
web at www.leco.com

