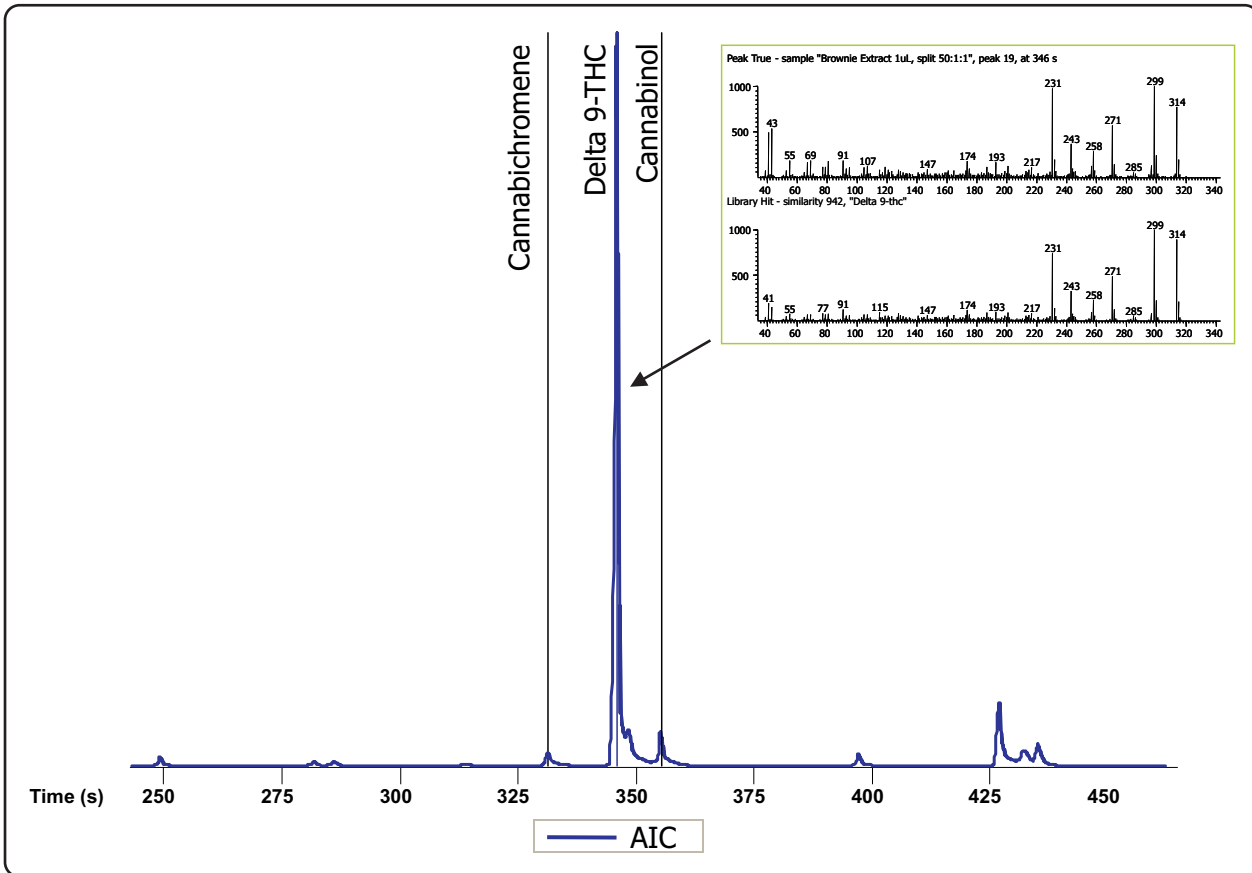


Detection and Identification of Cannabinoids in Chocolate Brownies by GC-TOFMS

Life Science and Chemical Analysis Centre
LECO Corporation, Saint Joseph, Michigan USA



A GC-TOFMS chromatogram of the pentane extract from a chocolate brownie laced with marijuana is shown. The inset shows the spectrum obtained and resulting library match for delta-9-tetrahydrocannabinol, the main psychoactive substance found in the cannabis plant.

Column:
10 m x 0.18 mm x 0.2 μ m Rtx-5

TOFMS:
35 to 600 m/z @ 20 spectra/s

For questions on this analysis e-mail us at:
life_science@leco.com

For a complete listing of snapshots and application notes visit us on the web at www.leco.com

