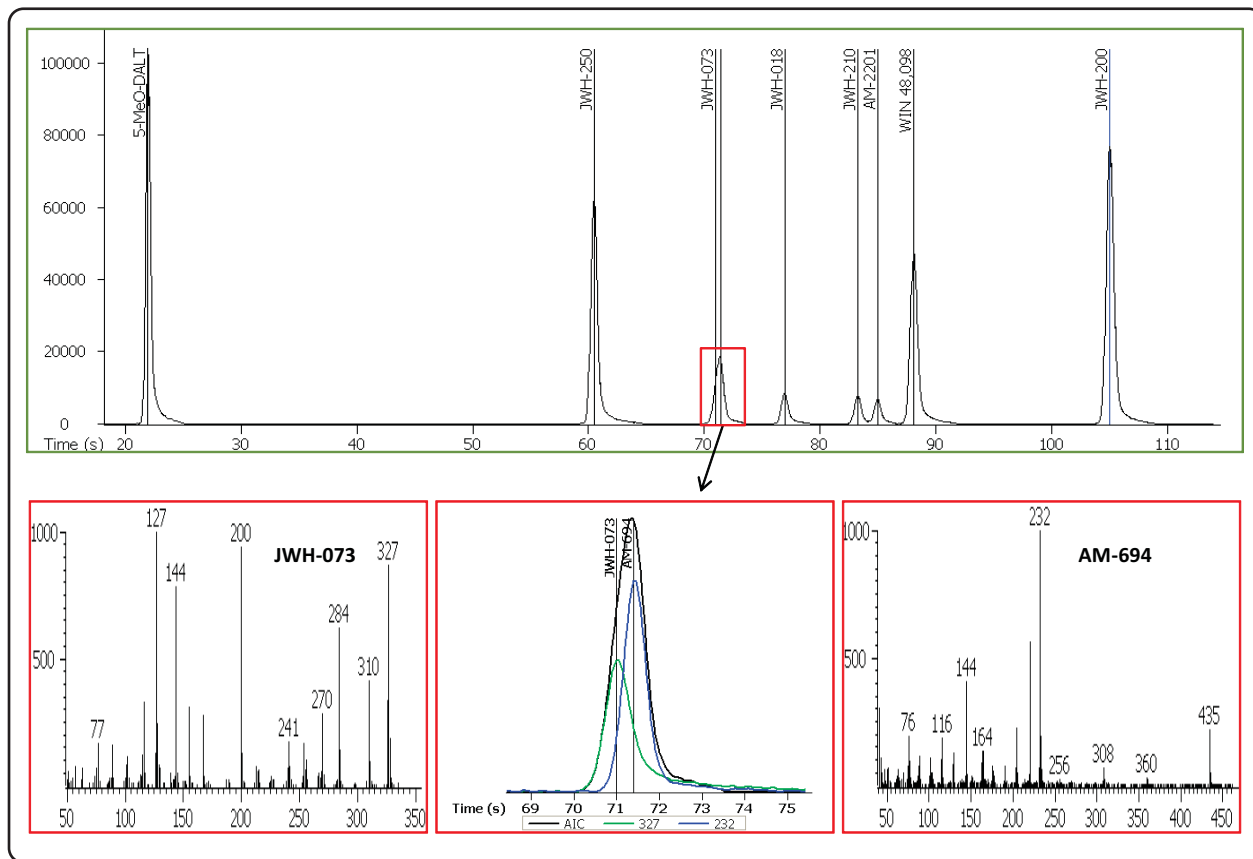


Fast Analysis of Cannabinomimetic Compounds by GC-TOFMS

Life Science and Chemical Analysis Centre
LECO Corporation, Saint Joseph, Michigan USA



A chromatogram showing the rapid analysis of nine cannabinomimetic compounds in just under 110 seconds. Notice there was complete chromatographic coelution of JWH-073 and AM-694. The mass spectral deconvolution capabilities of TOFMS and the ChromaTOF® software successfully deconvolved these analytes whose peak apices differed by only 0.4 seconds. The data was generated on the LECO TruTOF® HT GC-TOFMS.

Column:
2.5 m x 0.18 mm x 0.2 µm, Rtx-5

TOFMS:
20 spectra/s

For questions on this analysis e-mail us at:
life_science@leco.com

For a complete listing of snapshots and application notes visit us on the web at www.leco.com

