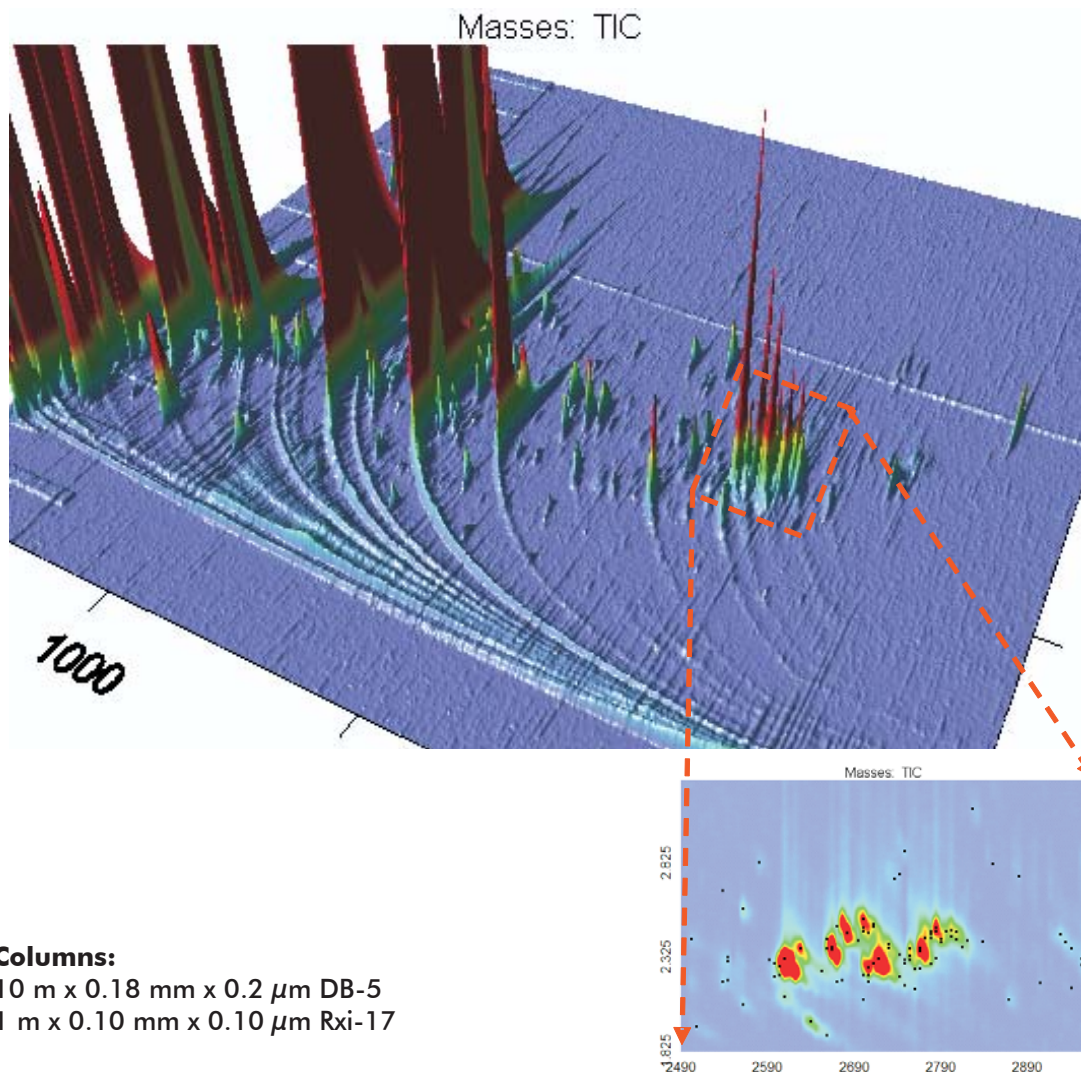


Analysis of a Fermented Beverage by SBSE-GCxGC-TOFMS

Life Science and Chemical Analysis Centre
LECO Corporation, Saint Joseph, Michigan USA



Columns:
10 m x 0.18 mm x 0.2 μ m DB-5
1 m x 0.10 mm x 0.10 μ m Rxi-17

TOFMS:
40 to 350 m/z @ 200 spectra/s

For questions on this analysis
e-mail us at: life_science@leco.com

For a complete listing of snapshots
and application notes visit us on the
web at www.leco.com

