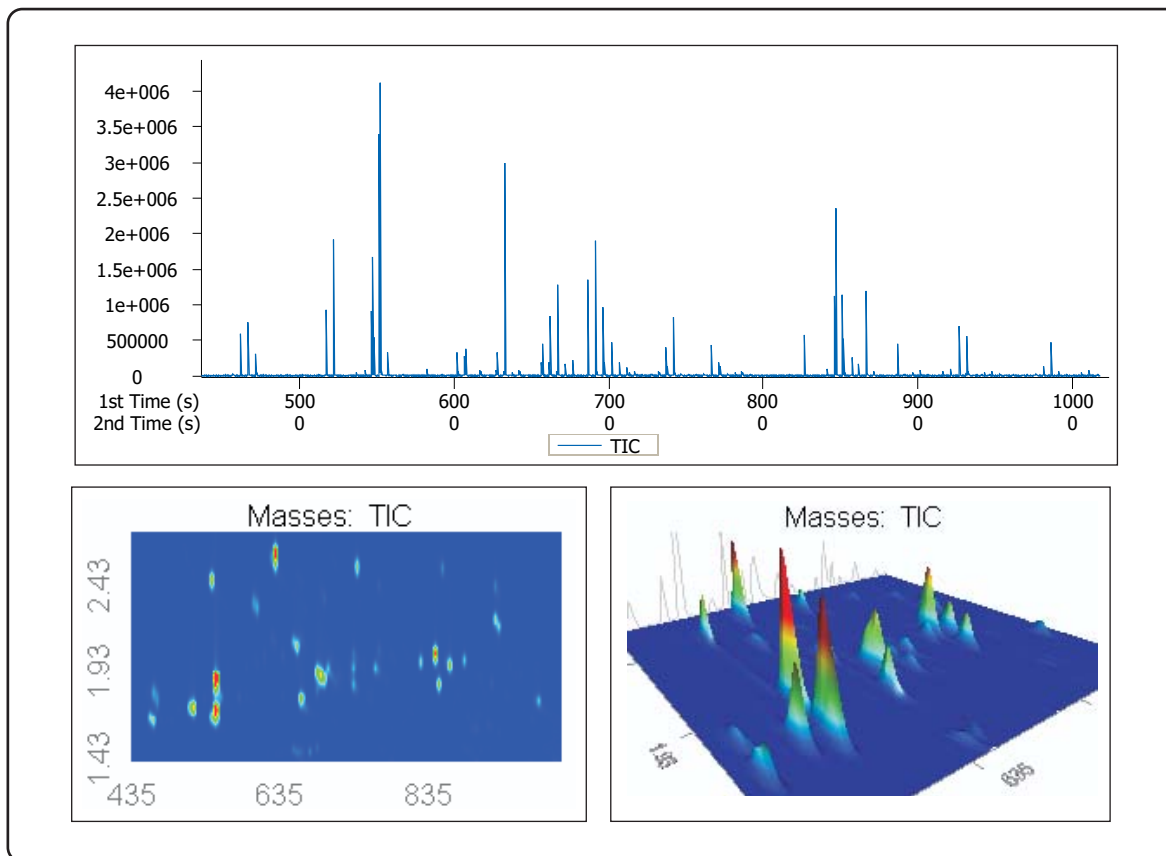


# Analysis of Hand Soap by GCxGC-TOFMS

Life Science and Chemical Analysis Centre  
LECO Corporation, Saint Joseph, Michigan USA



**This injection of Hand Soap was analyzed by GCxGC-TOFMS to highlight the capability of the system to display peaks in the second dimension that would not be visible by conventional gas chromatography.**

## Columns:

10 m x 0.18mm x 0.2  $\mu$ m Rtx-5  
1.5 m x 0.10 mm x 0.1  $\mu$ m Rtx-17

## TOFMS:

29 to 300 m/z @ 100 spectra/s

For questions on this analysis  
e-mail us at: [life\\_science@leco.com](mailto:life_science@leco.com)

For a complete listing of snapshots  
and application notes visit us on the  
web at [www.leco.com](http://www.leco.com)

