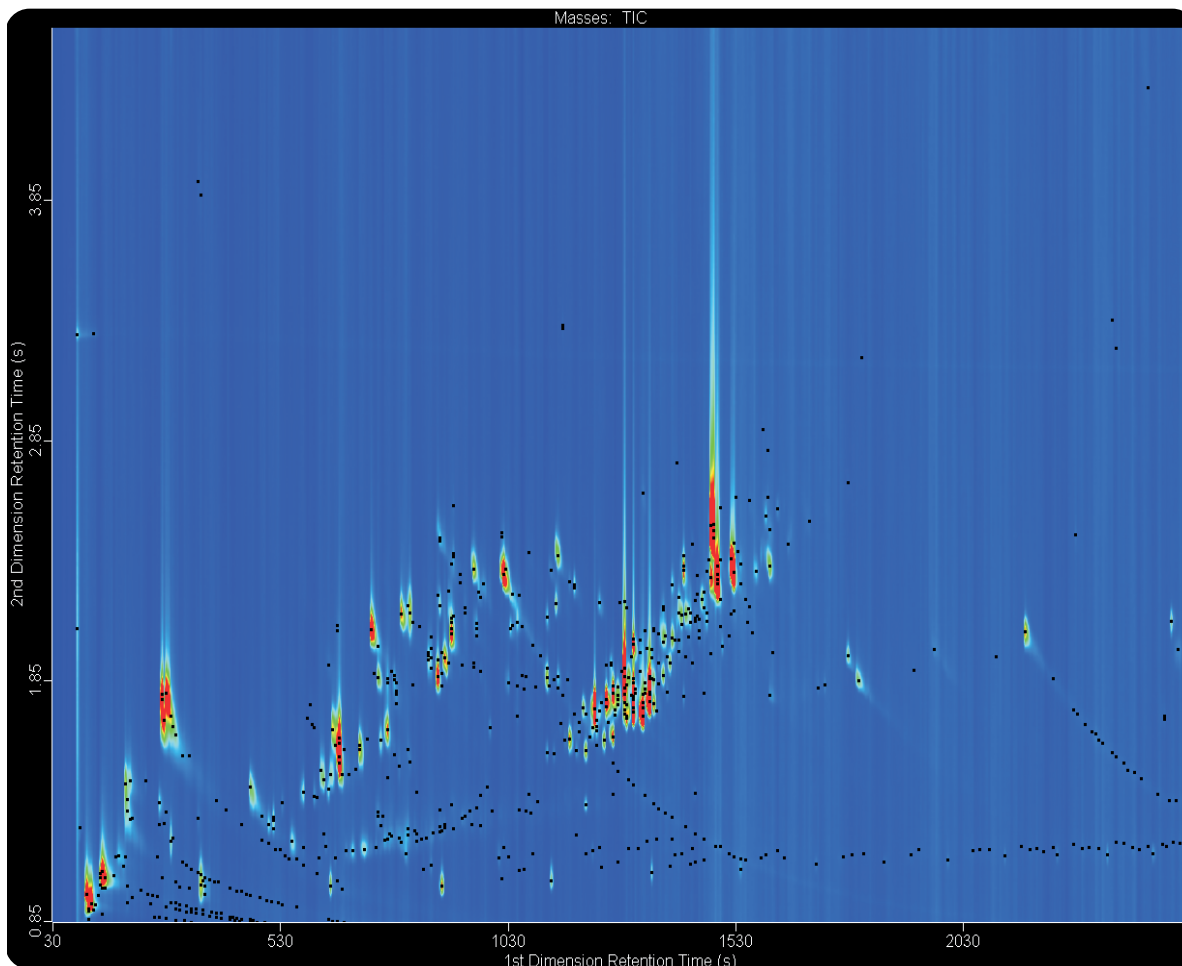


# GCxGC-TOFMS Headspace Analysis of Volatile Flavor Components in a Spice

Life Science and Chemical Analysis Centre  
LECO Corporation, Saint Joseph, Michigan USA



**GCxGC-TOFMS Contour Plot chromatogram showing over 850 peaks found.**

#### Columns:

30 m x 0.25 mm x 0.25  $\mu$ m Rtx-1ms  
1.5 m x 0.18 mm x 0.18  $\mu$ m DB-17ms

#### TOFMS:

40 to 400 m/z @ 200 spectra/s

For questions on this analysis  
e-mail us at: [life\\_science@leco.com](mailto:life_science@leco.com)

For a complete listing of snapshots  
and application notes visit us on the  
web at [www.leco.com](http://www.leco.com)

