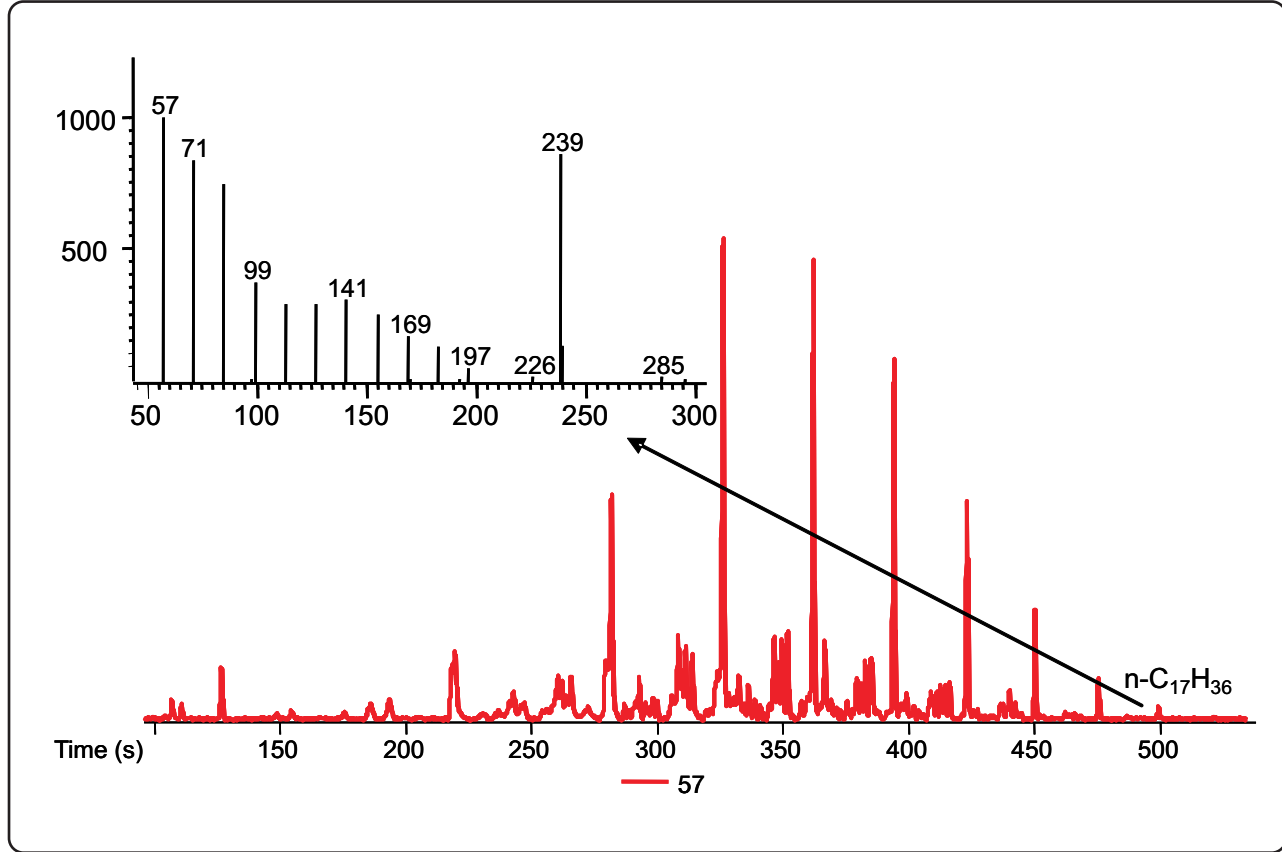


Analysis of Jet Fuel by GC-TOFMS

Life Science and Chemical Analysis Centre
LECO Corporation, Saint Joseph, Michigan USA



Column:
10 m x 0.18 mm x 0.18 μ m DB-5 MACH

TOFMS:
45 to 600 m/z @ 20 spectra/s
CI source with methane reagent gas

For questions on this analysis e-mail us at:
life_science@leco.com

For a complete listing of snapshots and application notes visit us on the web at www.leco.com

