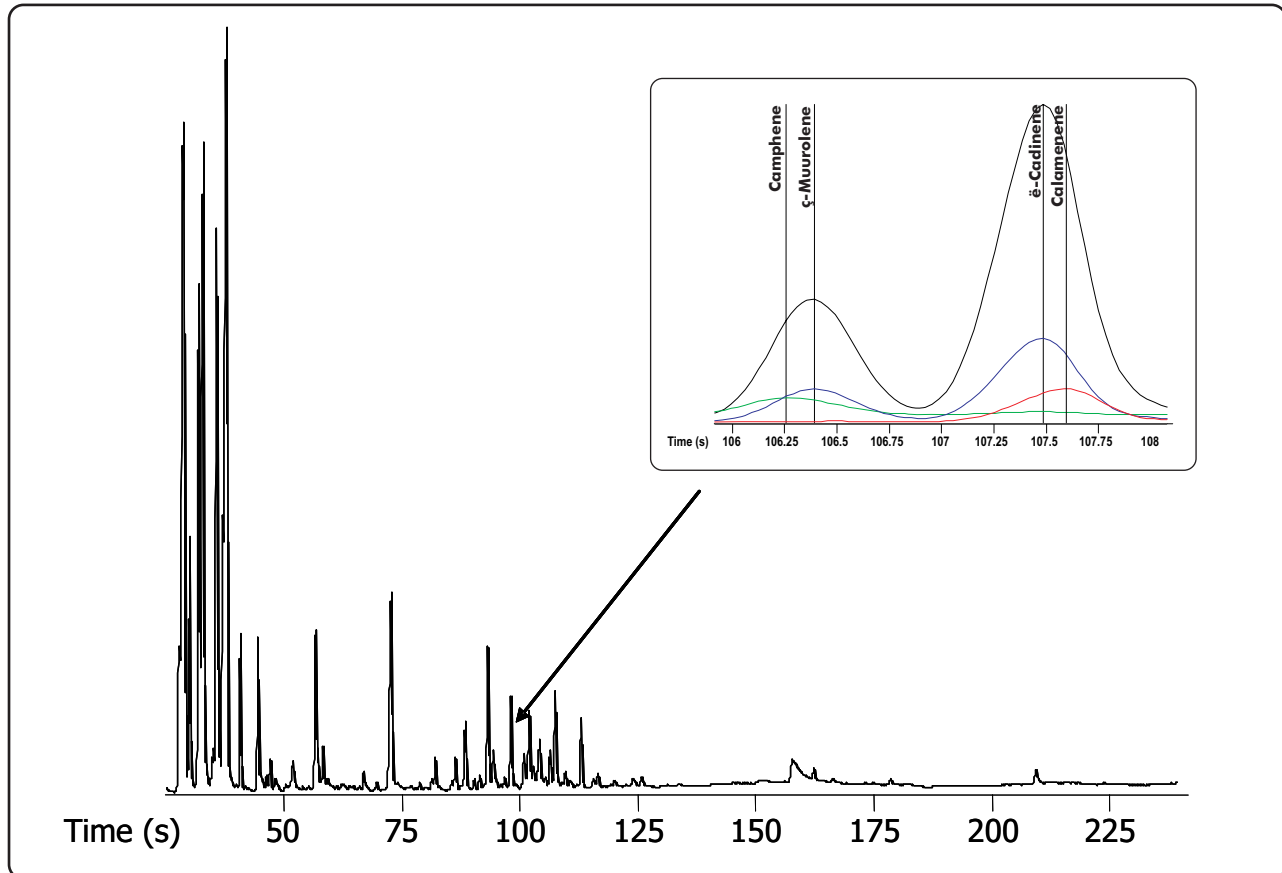


# Analysis of Juniper Berry Essential Oil by GC-TOFMS

Life Science and Chemical Analysis Centre  
LECO Corporation, Saint Joseph, Michigan USA

Application Snapshot



**Column:**  
10 m x 0.18 mm x 0.18  $\mu$ m DB-5

**TOFMS:**  
40 to 700 m/z @ 30 spectra/s

For questions on this analysis e-mail us at:  
[life\\_science@leco.com](mailto:life_science@leco.com)

For a complete listing of snapshots and application notes visit us on the web at [www.leco.com](http://www.leco.com)

