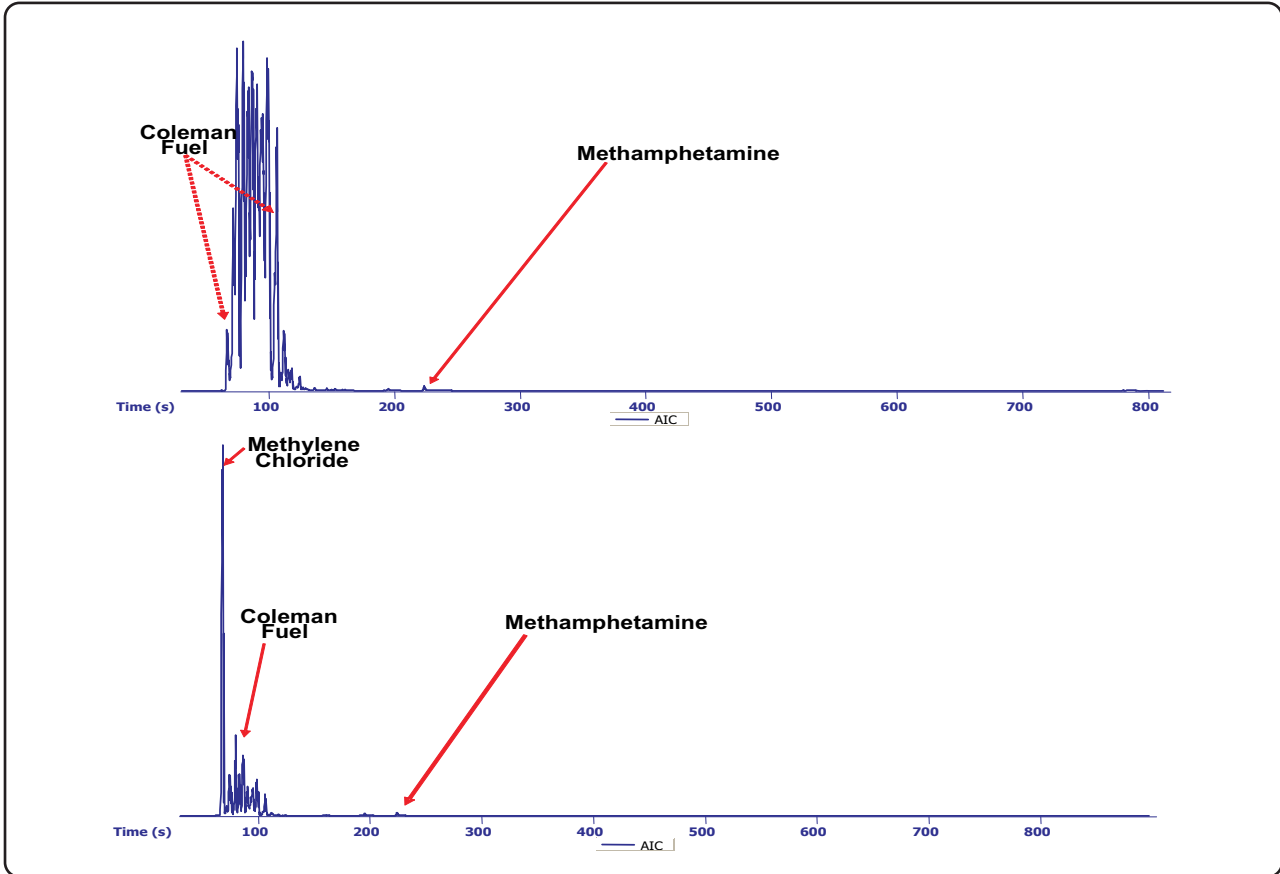


GC-TOFMS Analysis of Clandestine "Meth" Lab Process Samples

Life Science and Chemical Analysis Centre
LECO Corporation, Saint Joseph, Michigan USA



Illegal drugs of abuse analysis of "Meth" lab process samples showing positive identification of methamphetamine in volatile and aqueous samples.

Column:
30 m x 0.25 mm x 0.25 μ m Rxi-5ms

TOFMS:
45 to 450 m/z @ 5 spectra/s

For questions on this analysis e-mail us at:
life_science@leco.com

For a complete listing of snapshots and application notes visit us on the web at www.leco.com

