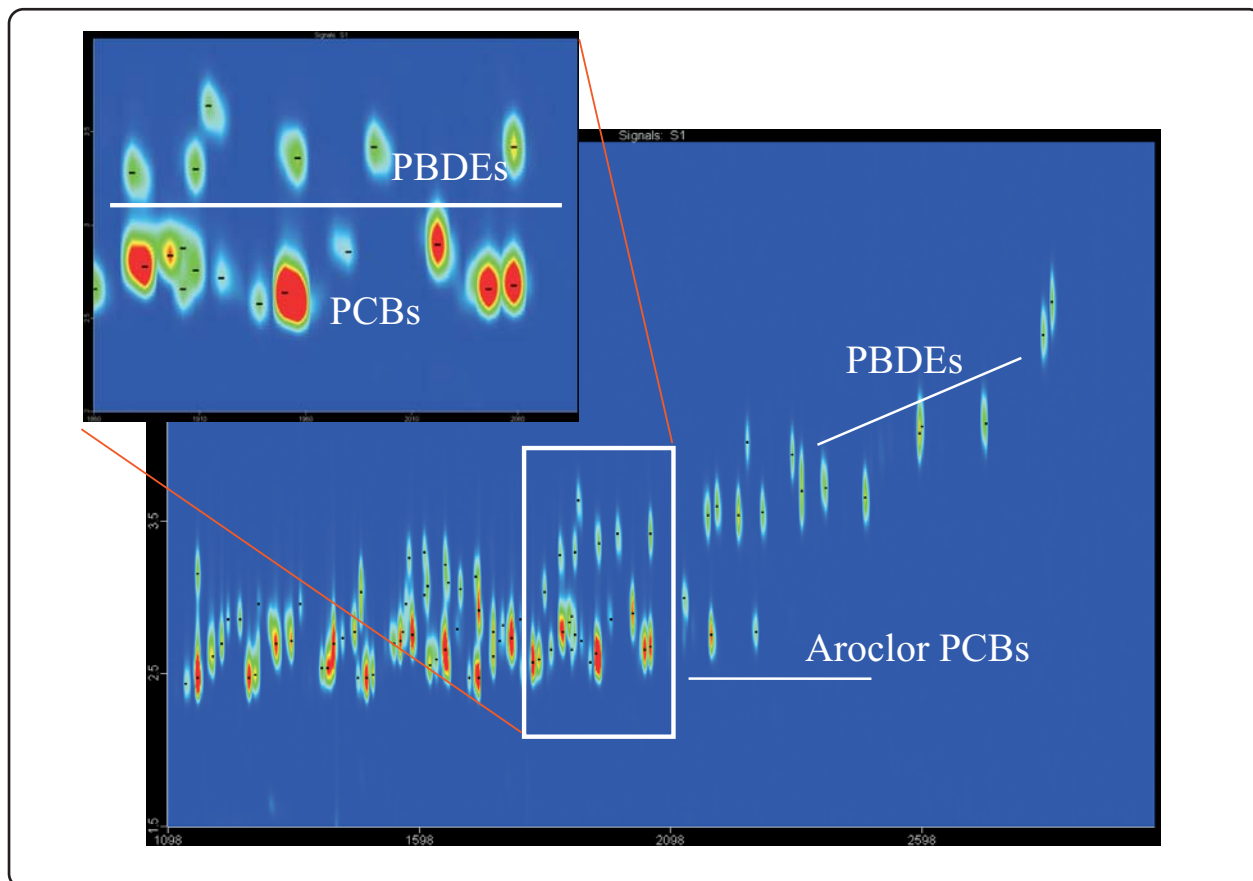


Separation and Identification of PCB's and PBDE's by GCxGC-ECD

Life Science and Chemical Analysis Centre
LECO Corporation, Saint Joseph, Michigan USA



PBDE's and PCB's are separated by GCxGC chromatography and can be selectively detected with an ECD to low fg levels.

Columns:

10 m x 0.2 mm x 0.2 μ m Rtx-5
1.1 m x 0.10 mm x 0.10 μ m DB-17

Detector:

μ ECD

For questions on this analysis
e-mail us at: life_science@leco.com

For a complete listing of snapshots
and application notes visit us on the
web at www.leco.com

