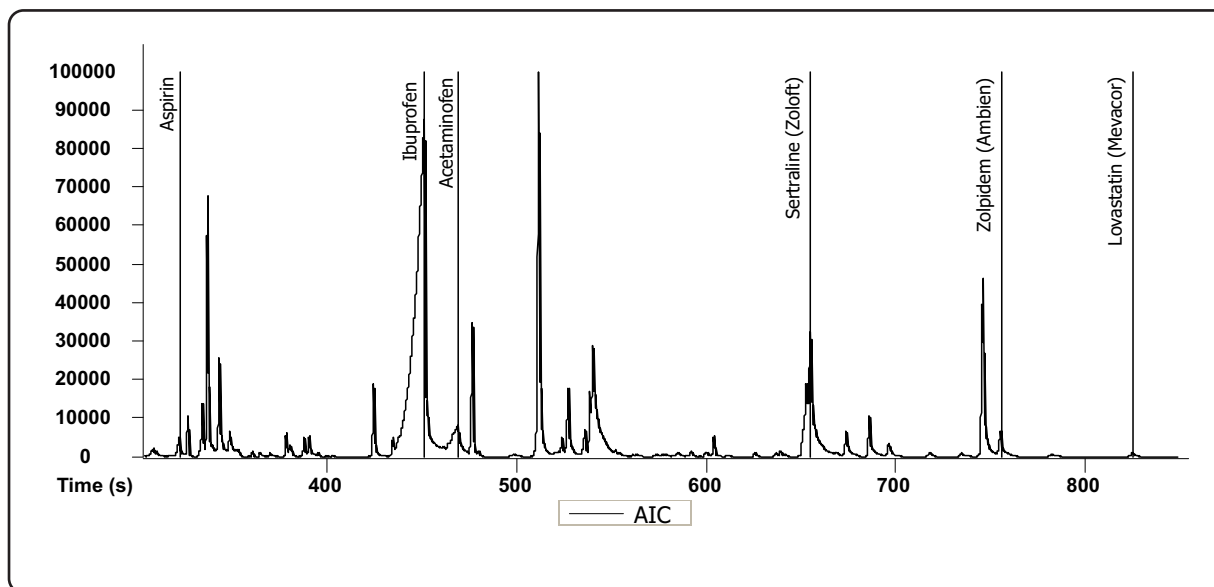


# Analysis of Water Spiked with Pharmaceuticals by SPME GC-TOFMS

Life Science and Chemical Analysis Centre  
LECO Corporation, Saint Joseph, Michigan USA



**Automated SPME-GC-TOFMS was used to detect pharmaceuticals which were spiked into water.**

#### Column:

10 m x 0.18 mm x 0.18  $\mu$ m Rxi-5ms

#### TOFMS:

40 to 800 m/z @ 20 spectra/s

For questions on this analysis e-mail us at:  
[life\\_science@leco.com](mailto:life_science@leco.com)

For a complete listing of snapshots and application notes visit us on the web at [www.leco.com](http://www.leco.com)

