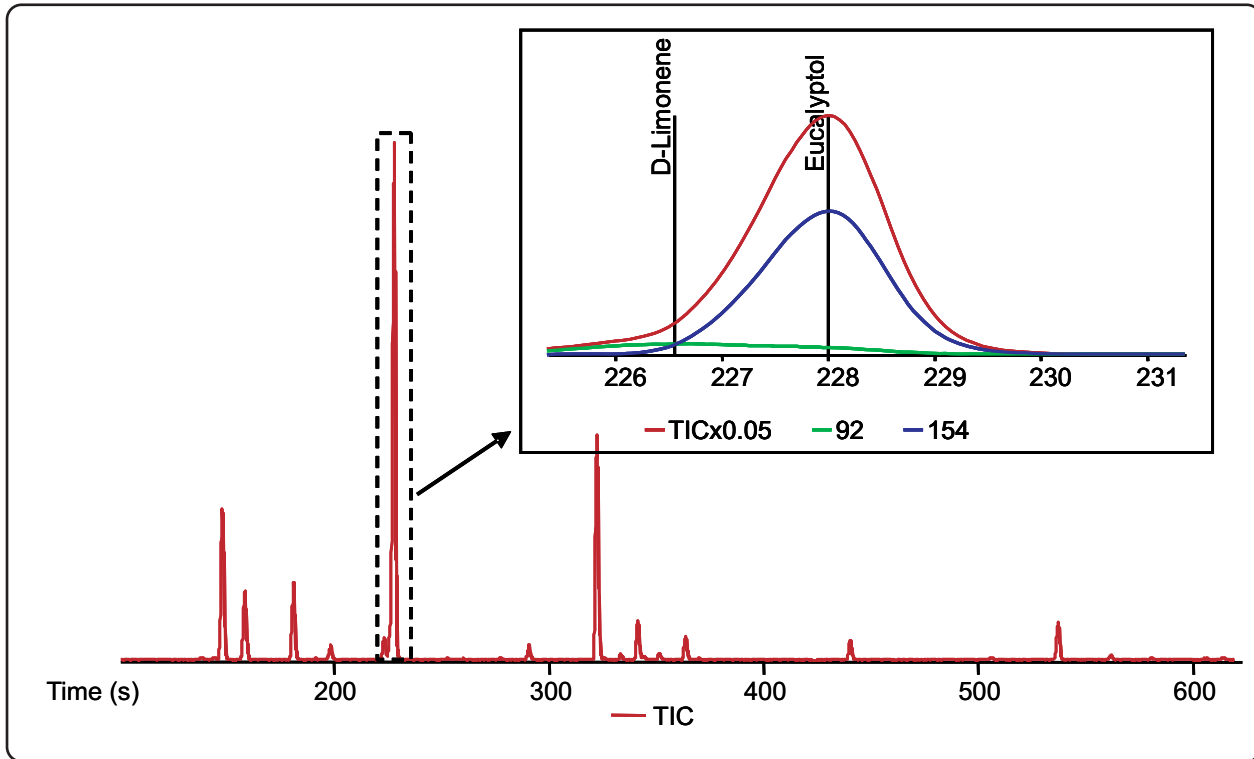


Analysis of Rosemary Oil by GC-TOFMS

Life Science and Chemical Analysis Centre
LECO Corporation, Saint Joseph, Michigan USA



Total Ion Chromatogram (TIC) for the analysis of a rosemary oil sample. The inset shows the overlap of two components (Limonene and Eucalyptol) under the TIC trace.

Column:
9.4 m x 0.18 mm x 0.2 μ m DB-5

TOFMS:
35 to 300 m/z @ 20 spectra/s

For questions on this analysis e-mail us at:
life_science@leco.com

For a complete listing of snapshots and application notes visit us on the web at www.leco.com

