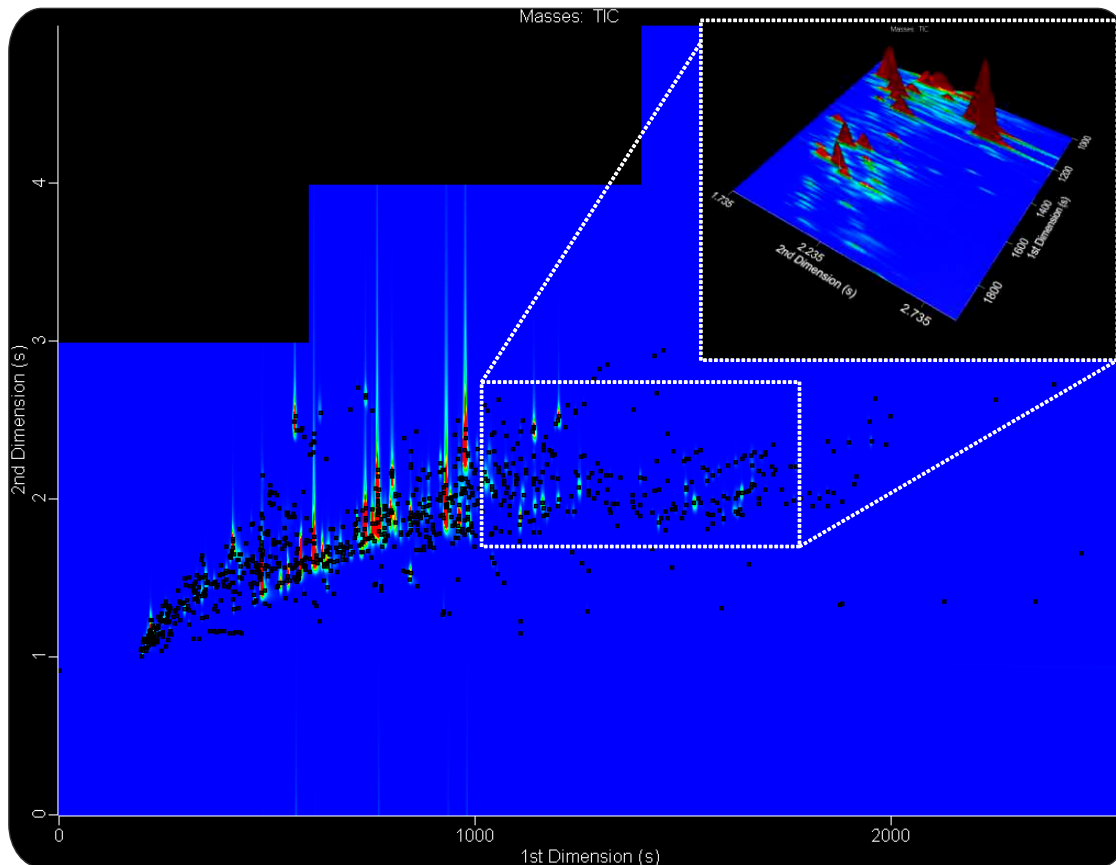


Headspace SPME-GCxGC-TOFMS of Sagebrush with Variable Modulation

Life Science and Chemical Analysis Centre
LECO Corporation, Saint Joseph, Michigan USA

Application Snapshot



This novel food/flavor/fragrance headspace SPME-GCxGC-TOFMS analysis of sagebrush identified 627 compounds with a S/N of 150 and mass spectral match similarity of at least 70%. This application utilized variable modulation to optimize the chromatographic separation.

Columns:

30 m x 0.25 mm x 0.25 μm , Rxi-5Sil MS
1.5 m x 0.10 mm x 0.10 μm , BPX-50

TOFMS:

45 to 450 m/z @ 200 spectra/s

For questions on this analysis
e-mail us at: life_science@leco.com

For a complete listing of snapshots
and application notes visit us on the
web at www.leco.com



LECO