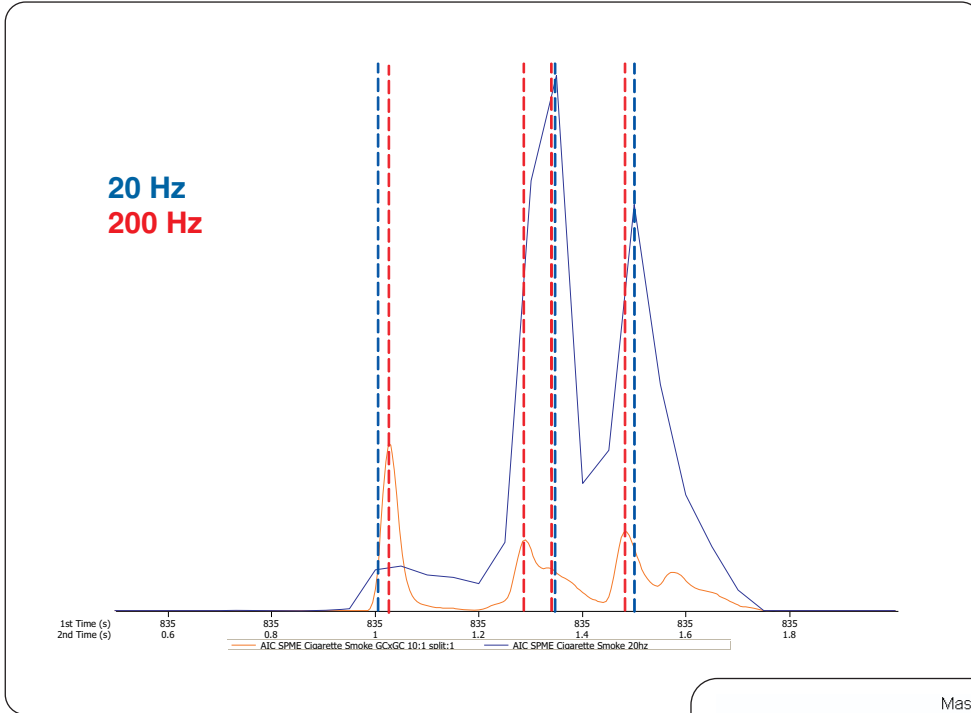
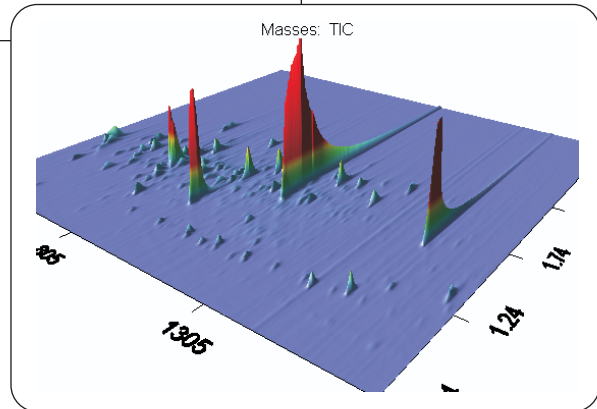


Effects of Sampling Rate on Peak Identification in GCxGC-TOFMS

Life Science and Chemical Analysis Centre
LECO Corporation, Saint Joseph, Michigan USA



The two chromatograms show the same sample acquired at two sampling rates. The sample collected at the slower rate has fewer detected peaks and the peak markers are not as accurately placed.



Columns:

10 m x 0.18 mm x 0.2 μ m Rtx-5
1.0 m x 0.10 mm x 0.1 μ m Rtx-17

TOFMS:

35 to 450 m/z @ 200 spectra/s

For questions on this analysis
e-mail us at: life_science@leco.com

For a complete listing of snapshots
and application notes visit us on the
web at www.leco.com

