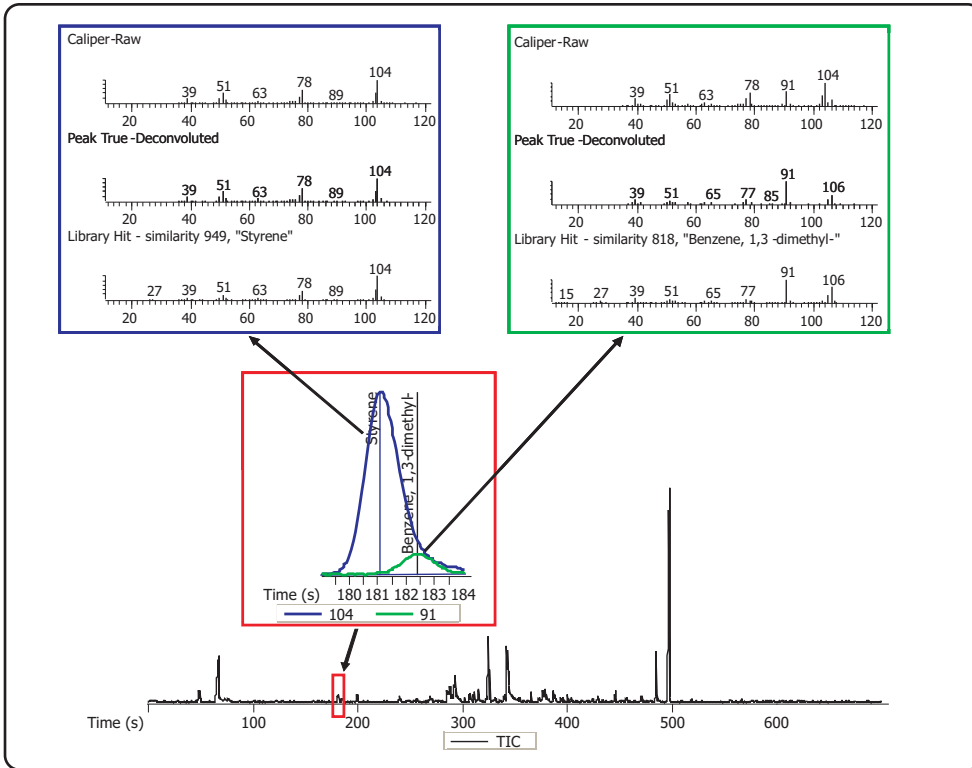


Detection and Identification of Volatile Components in New Vehicle Interior by Headspace-SPME-GC-TOFMS

Life Science and Chemical Analysis Centre
LECO Corporation, Saint Joseph, Michigan USA



A GC-TOFMS total ion chromatogram of volatile components collected by SPME from a new automobile interior is shown. The insets show an example of chromatographically unresolved peaks that were separated and identified using the True Signal Deconvolution[®] algorithm of the ChromaTOF[®] software. Automated Peak Find and identification significantly reduce the time required of the analyst to identify the large number of peaks typical of such analyses. In addition, analytes that may go undetected by manual means of data interpretation are often characterized. This particular air sample contained over 140 analytes at a signal to noise of ≥ 100 .

Column:
10 m x 0.18 mm x 0.2 μ m Rtx-5

TOFMS:
35 to 500 m/z @ 20 spectra/s

For questions on this analysis e-mail us at:
life_science@leco.com

For a complete listing of snapshots and application notes visit us on the web at www.leco.com

