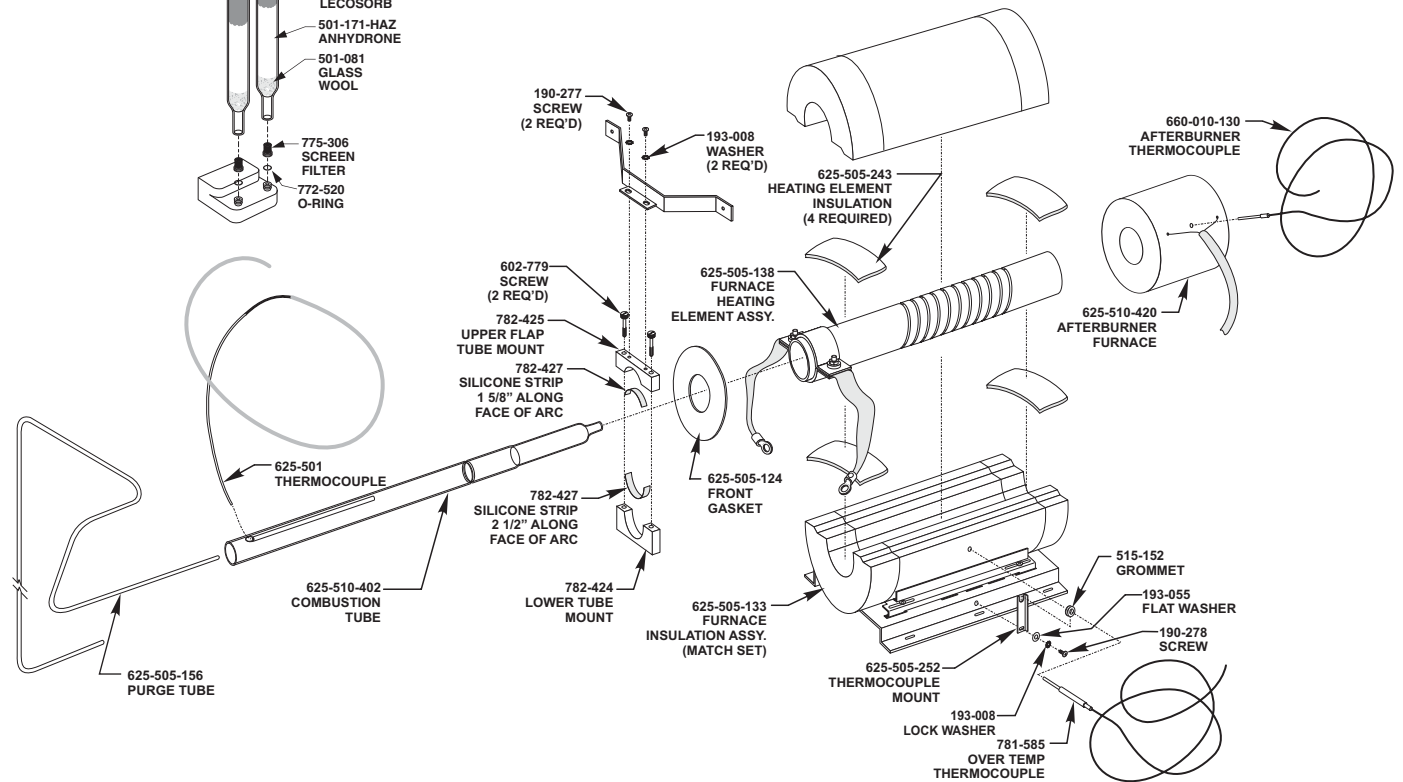
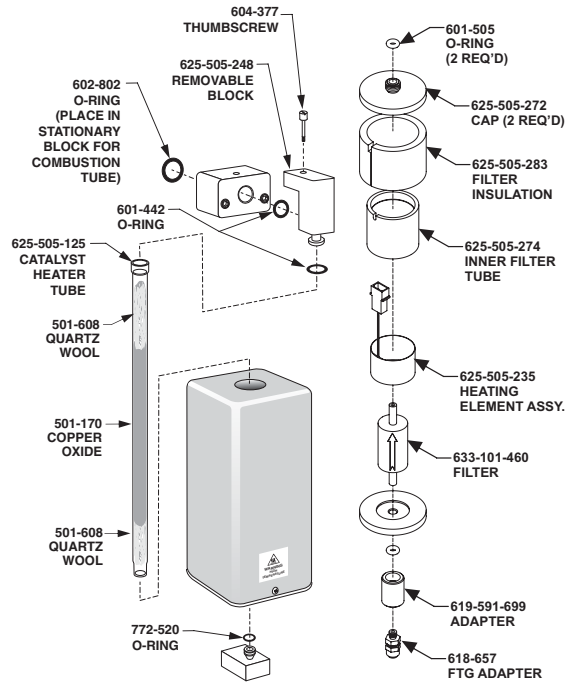
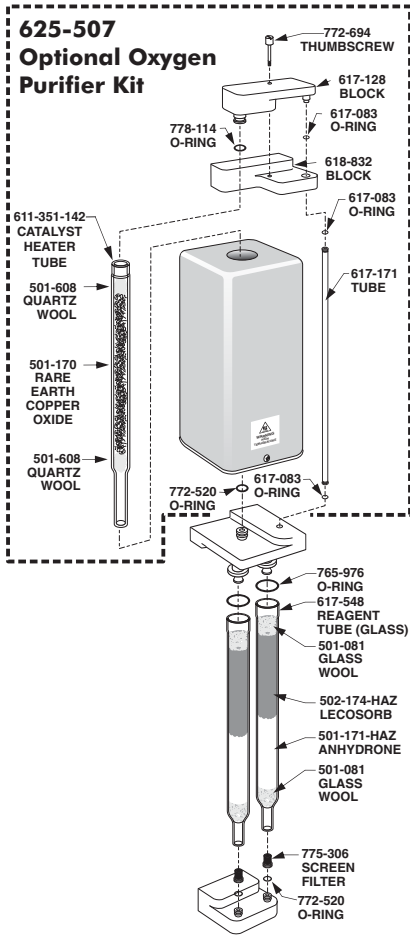


Note: Part numbers and standards' values may change. Consult LECO for the latest information.

## 625-507 Optional Oxygen Purifier Kit



See reverse side for contact information

**OPERATING SUPPLIES**

781-335 Quartz Boat  
 782-059 Nickel Boat Liner (10/pkg)  
 625-505-168 Combustion Tube  
 625-505-430 Nickel Boats (50/pkg)

**CATALYSTS AND REAGENTS**

501-171-HAZ Anhydrone 454 g (1 lb.) bottle (10-16 mesh)  
 501-170 Copper Oxide 50 g bottle  
 502-156 Fluorhib (1 lb.)  
 502-493 Fluorhib HP (35 g)  
 501-081 Glass Wool 454 g (1 lb.) bottle  
 502-174-HAZ Lecosorb 500 g bottle, (20–30 mesh)  
 502-176-HAZ Lecosorb 500 g bottle, (8–20 mesh)  
 501-608 Quartz Wool 200 g bottle

**REAGENT TUBES**

617-548 Glass Anhydrone Tube, requires two 772-520 O-rings  
 625-505-125 Quartz Catalyst Heater Tube, requires two  
 772-520 O-rings

**OPERATION ACCESSORIES**

780-044 Boat Puller Assembly  
 761-929 Crucible Tongs  
 782-508 Quartz Wool Puller/Packing Tool Assembly  
 501-614 Spatula  
 625-505-137 Quartz Boat Tweezer

**CALIBRATION SAMPLES**

501-034 12% Carbon (50 g); Calcium Carbonate  
 502-029 1% Carbon (50 g); Synthetic Carbon  
 502-030 5% Carbon (50 g); Synthetic Carbon  
 502-630 0.5% Carbon (50 g); Synthetic Carbon  
 502-632 0.1% Carbon (50 g); Synthetic Carbon  
 502-091 12.3% Moisture (50 g); Calcium Oxalate  
 501-919 0.33% Moisture (100 g); SARM 4 Norite; SABS

*NOTE: Part numbers and standards' values may change.  
 Consult LECO for latest information.*

*Please Note: Quartz Tubes are typically utilized for higher temperature applications (i.e. catalyst tubes). Glass reagent/filter tubes are designed for lower temperature applications. Glass tubes should not be used in place of quartz tubes.*

**United States:**

Ph: 1-800-292-6141  
 Fax: 269-982-8977

**Canada:**

Ph: 1-800-268-0215  
 Fax: 905-564-6582

*represented by:*

**Other Countries:**

Ph: 269-983-5531  
 Fax: 269-983-3850

© 2011 LECO Corporation