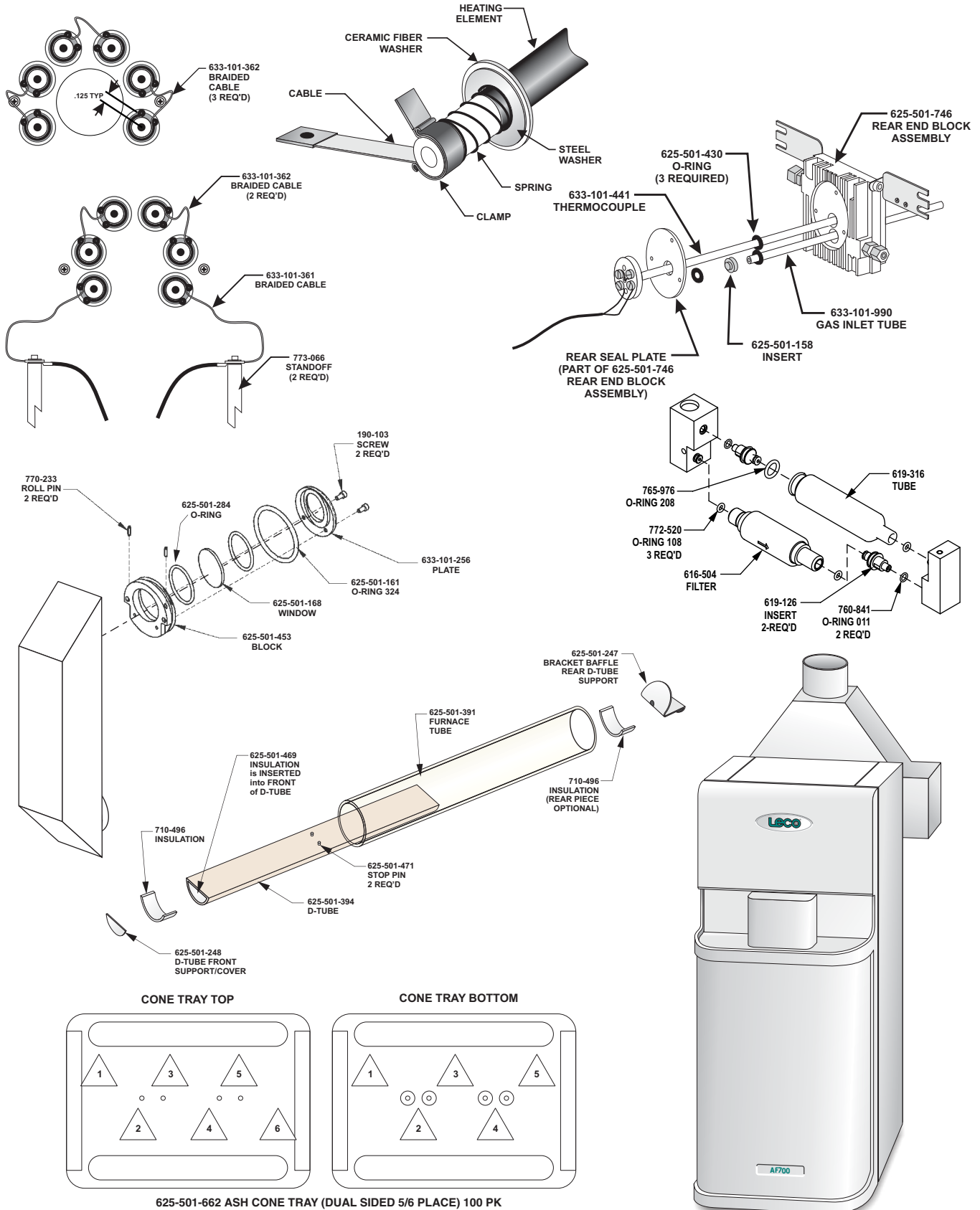


Note: Part numbers and standards' values may change. Consult LECO for the latest information.



See reverse side for contact information

**GENERAL OPERATING SUPPLIES**

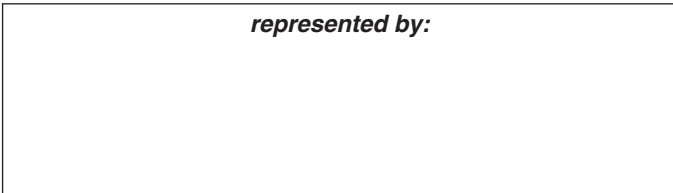
- 625-501-431 Door Interlock Bypass Key
- 761-929 Tongs
- 625-501-662 Ash Cone Tray  
(Dual sided, 5 and 6 place, 100/pkg)
- 776-957 Ash Cone Mold, ASTM D1857
- 625-501-363 Ash Cone Tray Tool
- 776-958 Spatula
- 502-496 Gold Wire Calibration Standard  
(6 in. x 0.2 in. diameter)
- 501-951 Nickel Wire Calibration Standard  
(6 in. x 0.2 in. diameter)
- 502-010 Dextrin Solution
- 501-233-HAZ Ceramic Alumina Adhesive
- 625-501-471 Test Pin Tray (Metal)
- 763-265 Glass Wool (0.5 lb)
- 616-504 Filter (0.01 micron)

**FURNACE AREA AND GLASSWARE**

- 613-564 T-Clamp Expansion Tool
- 625-501-328 AF700 Replacement Heating Element Kit including:
  - (2) 633-101-361 Braided Wire w/Clip
  - (5) 633-101-362 Braided Wire
  - (2) 625-501-149 O-Ring
  - (12) 625-501-342 Ceramic Fiber Washer
  - (3) 625-501-430 O-Ring
  - (1) 625-501-464 Heating Element  
(3/4 inch—6 in set)
  - (12) 625-501-470 Heating Element Clamp  
(3/4 inch)
- 625-501-361 AF700 Replacement Furnace Tube Kit including:
  - (2) 625-501-149 O-Ring
  - (1) 625-501-161 O-Ring
  - (2) 625-501-382 Ring Insulation
  - (1) 625-501-391 Mullite Furnace Tube
  - (3) 625-501-430 O-Ring
- 625-501-394 Mullite D-Tube
- 633-101-990 Mullite Furnace Gas Inlet
- 633-101-441 Furnace Thermocouple

*NOTES: Part numbers and standards' values may change. Consult LECO for latest information.*

**United States:**  
**Ph: 1-800-292-6141**  
**Fax:269-982-8977**  
**Canada:**  
**Ph: 1-800-268-0215**  
**Fax: 905-564-6582**



**Other Countries:**  
**Ph: 269-983-5531**  
**Fax: 269-983-3850**

© 2010 LECO Corporation