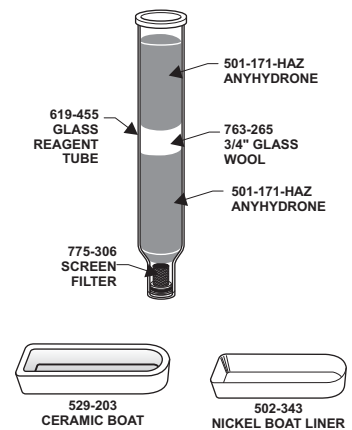
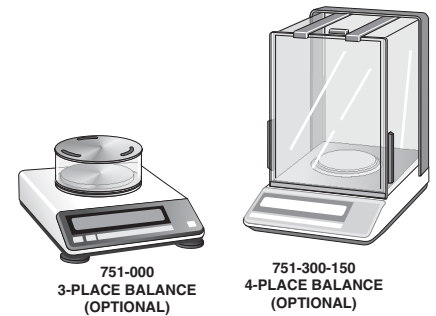
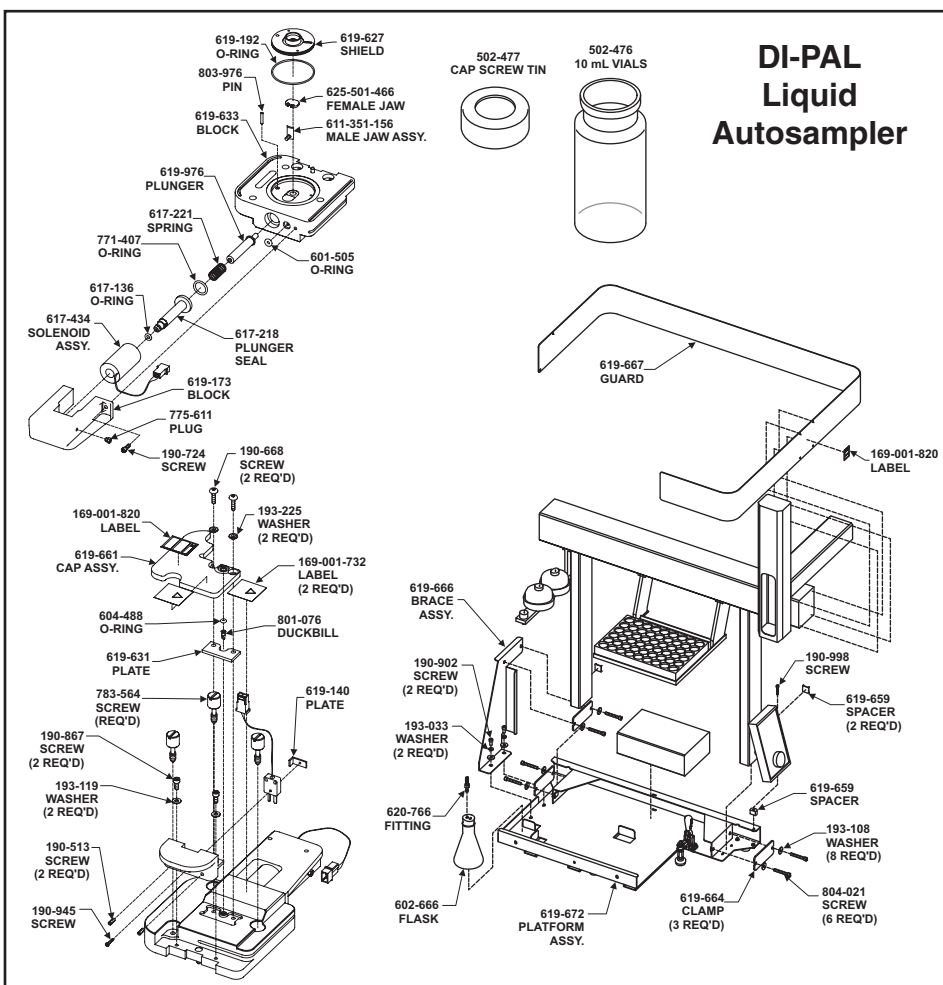
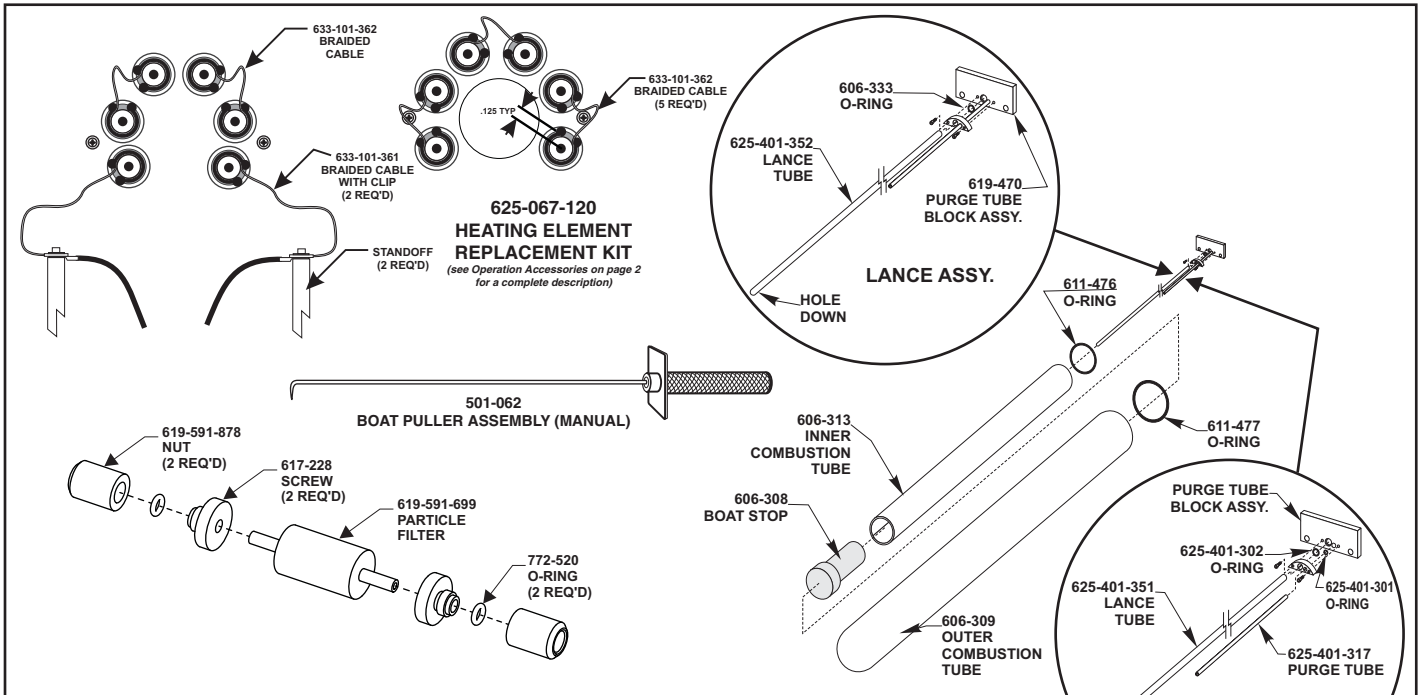


Note: Part numbers and standards' values may change. Consult LECO for the latest information.



Sulfur Add-On Module

See reverse side for contact information

GENERAL COMBUSTION SUPPLIES

501-171-HAZ	Anhydrous 454 g (1 lb. bottle)
769-608-HAZ	Antimony Metal 200 g bottle (used for removal of fluorine and chlorine)
606-308	Boat Stop, Ceramic
501-426	ComAid™ for Solids 454 g (1 lb.) bottle
501-427	ComAid™ for Liquids 454 g (1 lb.) bottle
502-321	COM-CAT 250 g bottle
529-203	Combustion Boat - Ceramic 100/package
528-203-250	Combustion Boat - Ceramic 250/package
769-610	F-CL Absorbent Material 225 g bottle
501-081	Glass Wool 454 g (1 lb.) package
763-265	Glass Wool 277 g (0.5 lb.) package
502-351	Halogen Scrubber 50 g bottle
502-343	Nickel Boat Liner 100/package
502-301	Tungsten Trioxide Power 125 g bottle

CAPSULES AND CRUCIBLES

529-203	Ceramic Boats 100/pkg
502-343	Nickel Boat Liners 100/pkg

OPERATION ACCESSORIES

606-403	Adapter Brush
501-062	Boat Puller Assembly (Manual)
761-929	Crucible Tongs
175-590	Diaphragm & Flapper Valve Kit (for Pump)
801-076	Duck Bill for Check Valve on DI-PAL Liquid Autosampler
613-564	Expansion Tool for T-Clamps
768-980	Particle Filter
502-023	Funnel
776-978	Glass Scoop, Large
503-032	Glass Scoop, Regular
625-067-120	Heating Element Replacement Kit includes: (2) 633-101-361 Braided Wire with Clip; (5) 633-101-362 Braided Wire; (1) 625-067 Heating Element (6/pkg); (1) 625-067-902 Kit Instructions; (12) 625-068 Heating Element Clamp; (12) 625-094 Terminal Gasket
619-630-110	Liquid Injector Kit, Manual
501-614	Spatula
619-628	Needle, 18 gauge
619-629	Needle, 18 gauge needle, 6/pkg
501-241	Vacuum Grease
502-478	1 mL Syringe for DiPal
625-390-101	100 mL Wash Bottles, Caps, and Septa for DiPal
625-390-102	Long Tension Cord for DiPal
625-390-101	Short Tension Cord for DiPal

COMBUSTION TUBES AND GLASSWARE

606-308	Boat Stop, Ceramic
502-476	10 mL Vials for DI-PAL (100/pkg)
606-313	Inner Combustion Tube, requires one (1) 611-476 O-ring, and one (1) 606-308 Boat Stop
606-309	Outer Combustion Tube, requires one (1) 611-477 O-ring
789-114	Purge Tube (stainless steel), Drilled
619-455	Large Anhydrous Reagent Tube

REFERENCE MATERIALS

COAL (50 grams)

Part No.	% Sulfur**
502-670	~0.5
502-671	~1.0
502-672	~2.0
502-673	~3.0
502-674	~4.5

CERTIFIED REFERENCE MATERIALS

COAL (50 grams)

Part No.	% S*	Part No.	% S*
502-383	0.25	502-386	1.5
502-384	0.75	502-387	3.0
502-385	1.0	502-388	5.0

RESIDUAL FUEL OIL (4 oz./118 ml)

Part No.	% S	Part No.	% S
502-389	0.1	502-392	2.0
502-390	0.5	502-393	3.0
502-391	1.0	502-394	4.5

WHITE MINERAL OIL (4 oz./118 ml)

Part No.	% S	Part No.	% S
502-417	0.01	502-421	1.0
502-418	0.05	502-422	2.0
502-419	0.10	502-423	3.0
502-420	0.50		

DIESEL FUEL (4 oz./118 ml)

Part No.	% S	Part No.	% S
502-424	0.01	502-429	1.0
502-425	0.03	502-430	2.0
502-426	0.05	502-431	3.0
502-427	0.10	502-432	4.5
502-428	0.50		

SET-UP STANDARDS

AMMONIUM CHLORIDE—LIQUID (10 mL vial)

Part No.	Nitrogen
502-601	100 ppm
502-602	1000 ppm

ZINC SULFIDE (50 grams)

Part No.	% Sulfur
502-085	32.91

GLYCINE (50 grams)

Part No.	% C	% H	% N	% S
502-211	32.00	6.67	18.66	—

CORN GLUTEN (50 grams)

Part No.	% C	% H	% N	% S
502-272	51.0–53.0	7.0–7.5	11.0–12.0	0.75–1.0

*Reported on Dry Basis

**Values vary—contact LECO for current levels.

NOTES: Plant tissue samples should be dried at 85°C for two hours; all other samples should be dried at 105°C for one hour.

Part numbers and standards' values may change. Consult LECO for latest information.